



FIG Working Week 2024

19-24 May

Accra, Ghana

Your World, Our World:
Resilient Environment
and Sustainable
Resource Management
for All

APPLICATION OF LAND ADMINISTRATION IN SECURING WILDLIFE MIGRATORY ROUTES IN KENYA: CHALLENGES AND PROSPECTS

Joycelyn Makena
Registered Valuer & Land Administrator
Head of Land Management, KWS
Council Member, Institution of Surveyors of Kenya



ORGANISED BY



PLATINUM SPONSORS





FIG Working Week 2024

19-24 May

Accra, Ghana

Your World, Our World:
Resilient Environment
and Sustainable
Resource Management
for All

COUNTRY CONTEXT

- Population: Approx.54M, Land Area: 582,646 sq.km.
- 47 County Governments & a National Government
- Land categories: Public (13%), Private (20%) and Community Land (67%)
- Biodiversity needs land for movement, shelter, breeding, food
- Biodiversity conservation is a key pillar of economy, social & environmental development
 - Wildlife tourism contributes approx. 10% of GDP
 - Employment, enterprise and hold natural capital
 - Climate mitigation by habitat restoration and protection of water towers

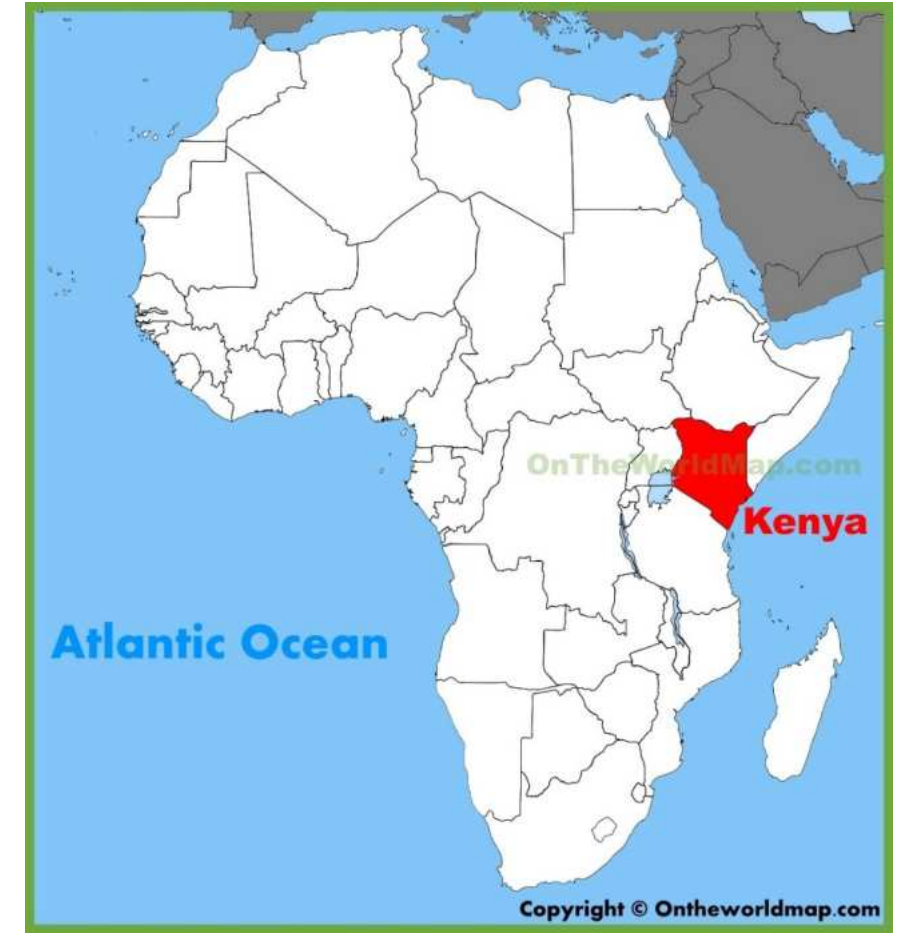




FIG Working Week 2024

19-24 May

Accra, Ghana

Your World, Our World:
Resilient Environment
and Sustainable
Resource Management
for All

STUDY BACKGROUND

- Conservation land use occupies 12% of the country's land mass
- Constitution provides for compliance with Multilateral Environmental Agreements (CITES, CMS, Ramsar) and environmental management
- Wildlife Policy, Strategies & Legislation
 - National Wildlife Policy (Sessional Paper No. 1 of 2020)
 - National Wildlife Strategy (2018)
 - Wildlife Conservation and Management Act (2013)
- Land Policy, Legislation & Regulations
 - National Land Policy (2009)
 - Legislation on land, community land, planning.
 - Land Regulations (2017)

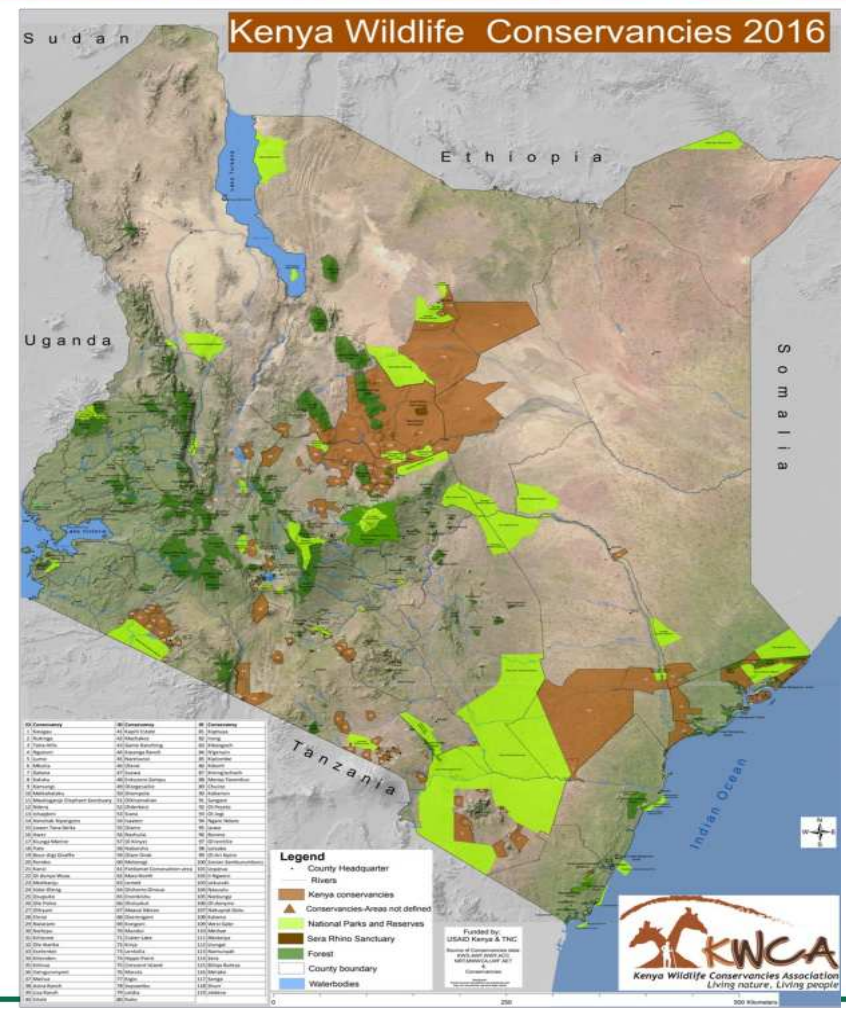




FIG Working Week 2024

19-24 May

Accra, Ghana

Your World, Our World:
Resilient Environment
and Sustainable
Resource Management
for All

STUDY OBJECTIVE & METHODOLOGY

Wildlife movements were nationally mapped in 2017 for key ecosystems
Implementation of the Report recommendations is pending
Ecological mapping continues and subdivision also continues unabated.
Could responsible land administration & management be the solution for
open, connected, functional and resilient migratory routes?

Methodology:

- Key Informant Interviews – technocrats & enthusiasts
- Survey to county land administrators & wildlife managers
- Literature Review
- Observations

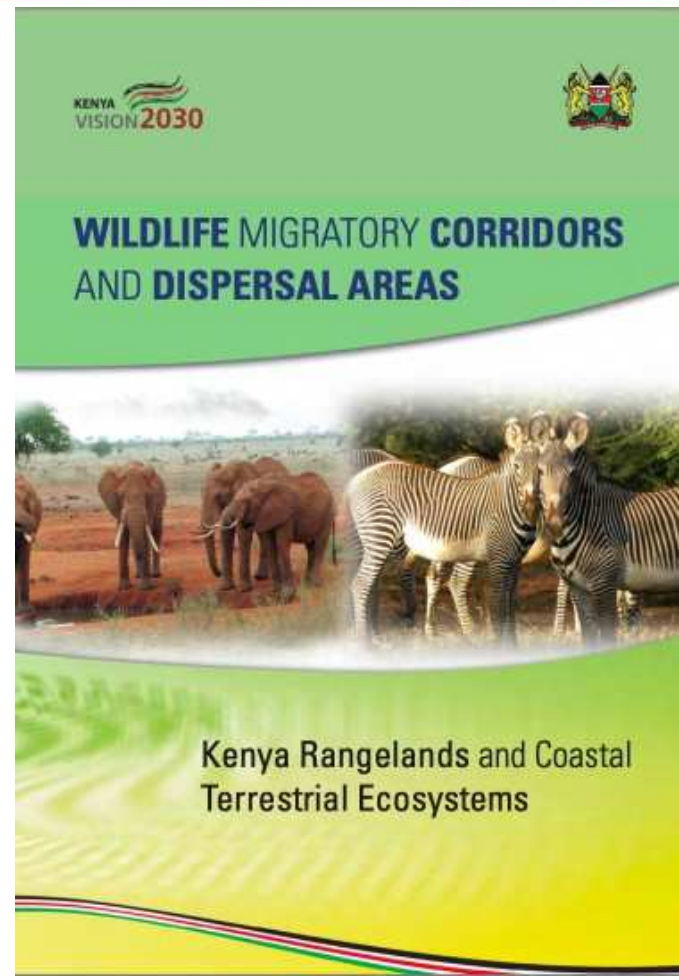




FIG Working Week 2024

19-24 May

Square Infographics

Accra, Ghana

Your World, Our World:
Resilient Environment
and Sustainable
Resource Management
for All

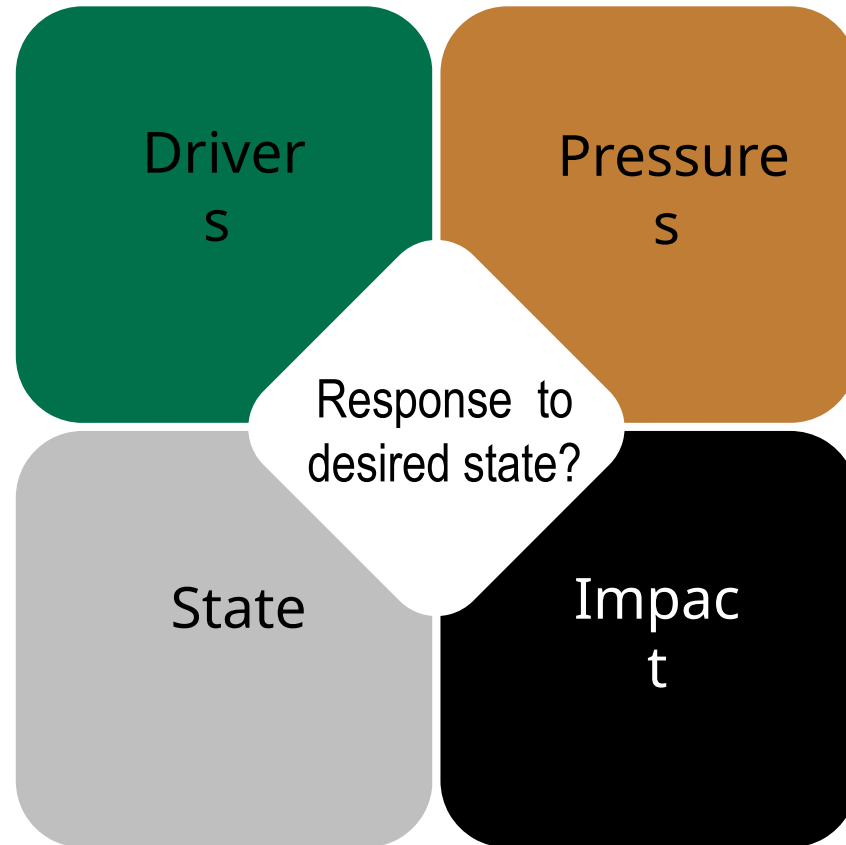
RESEARCH FRAMEWORK:

Drivers

Population increase
Land tenure changes
Climate change esp
droughts

State

Diminished routes
& dispersal areas
Increased human-
wildlife conflict
Wildlife insecurity



Pressures
Over-utilization
Land degradation
Land
fragmentation
Habitat loss

Impact
Isolation of
populations
Declining population
Effect on gene pools
Displacements
Loss of habitat

ORGANISED BY



PLATINUM SPONSORS





FIG Working Week 2024

19-24 May

Accra, Ghana

Your World, Our World:
Resilient Environment
and Sustainable
Resource Management
for All

STUDY AREA

Amboseli Ecosystem in Kajjiado county

County population – 1.1M

Land Area 21,293 sqkm. 5,700 under Amboseli Ecosystem

Key economic activities – tourism, agriculture, horticulture
& livestock production

Transboundary migration between Kenya (Amboseli National Park)
and Mount Kilimanjaro National Park)

- Amboseli National Park is listed as a UNESCO Biosphere Reserve and is an Important Bird Area (IBA)



ORGANISED BY



PLATINUM SPONSORS





FIG Working Week 2024

19-24 May

Your World, Our World:
Resilient Environment
and Sustainable
Resource Management
for All

ECOLOGICAL CORRIDOR MAPPING FOR AMBOSELI ECOSYSTEM

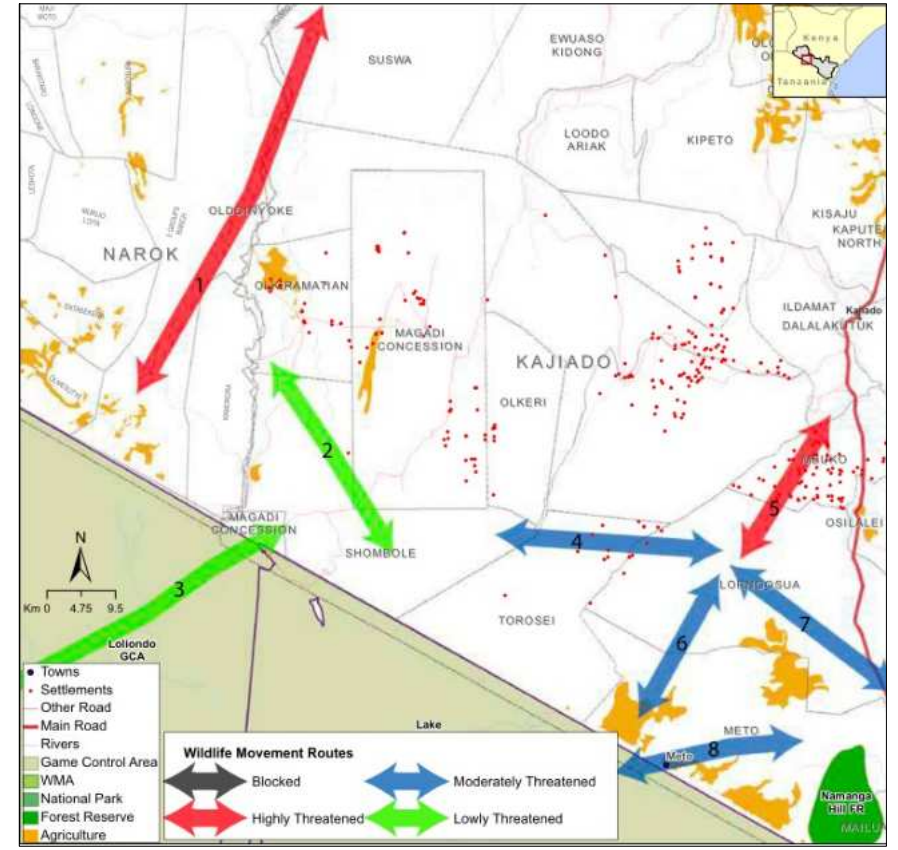
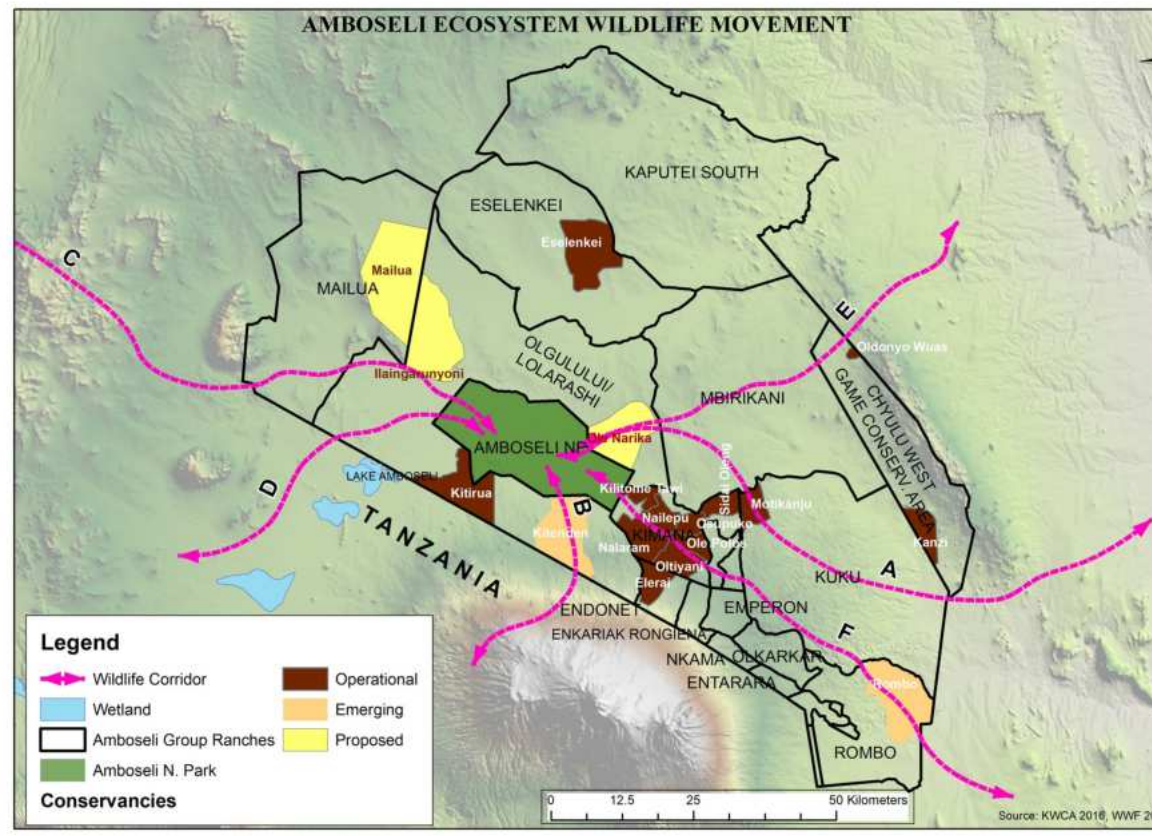




FIG Working Week 2024

19-24 May

Your World, Our World:
Resilient Environment
and Sustainable
Resource Management
for All

LAND TENURE DATA

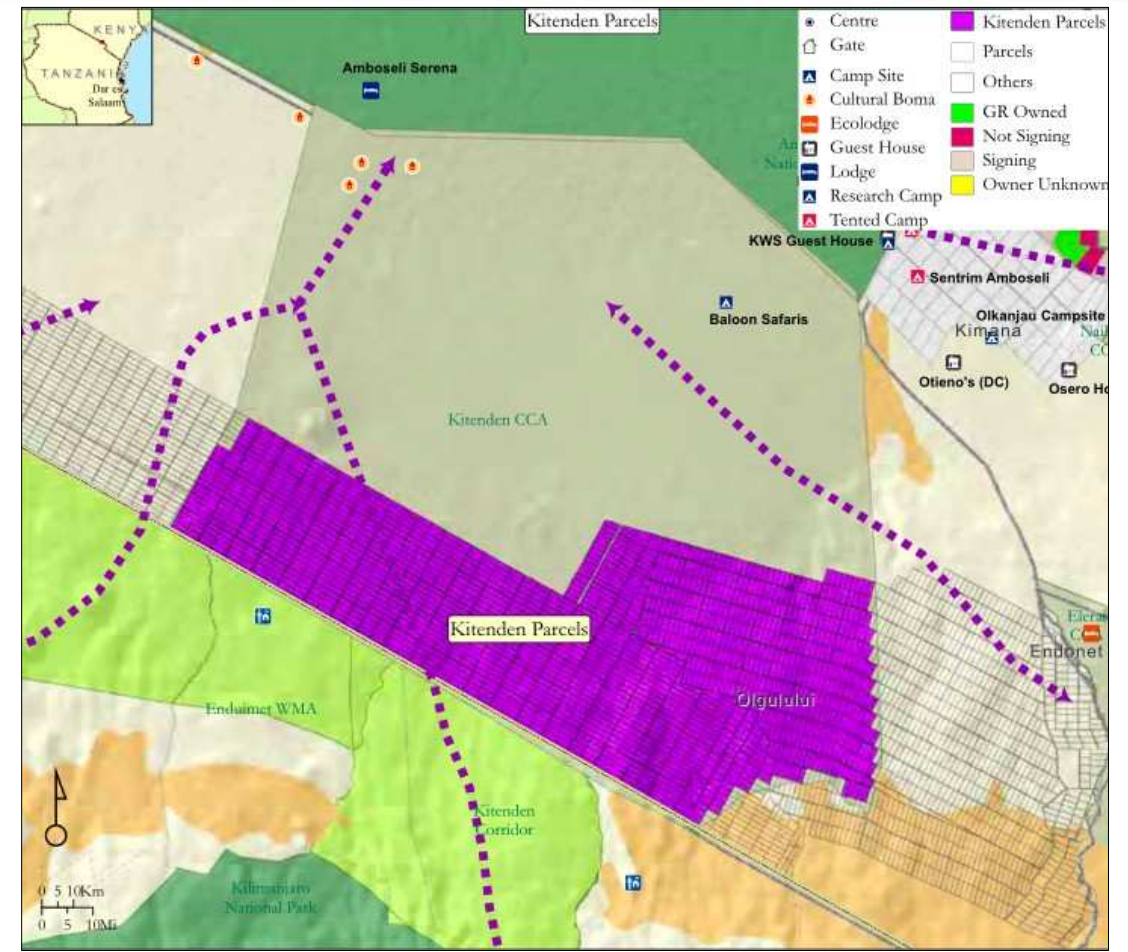
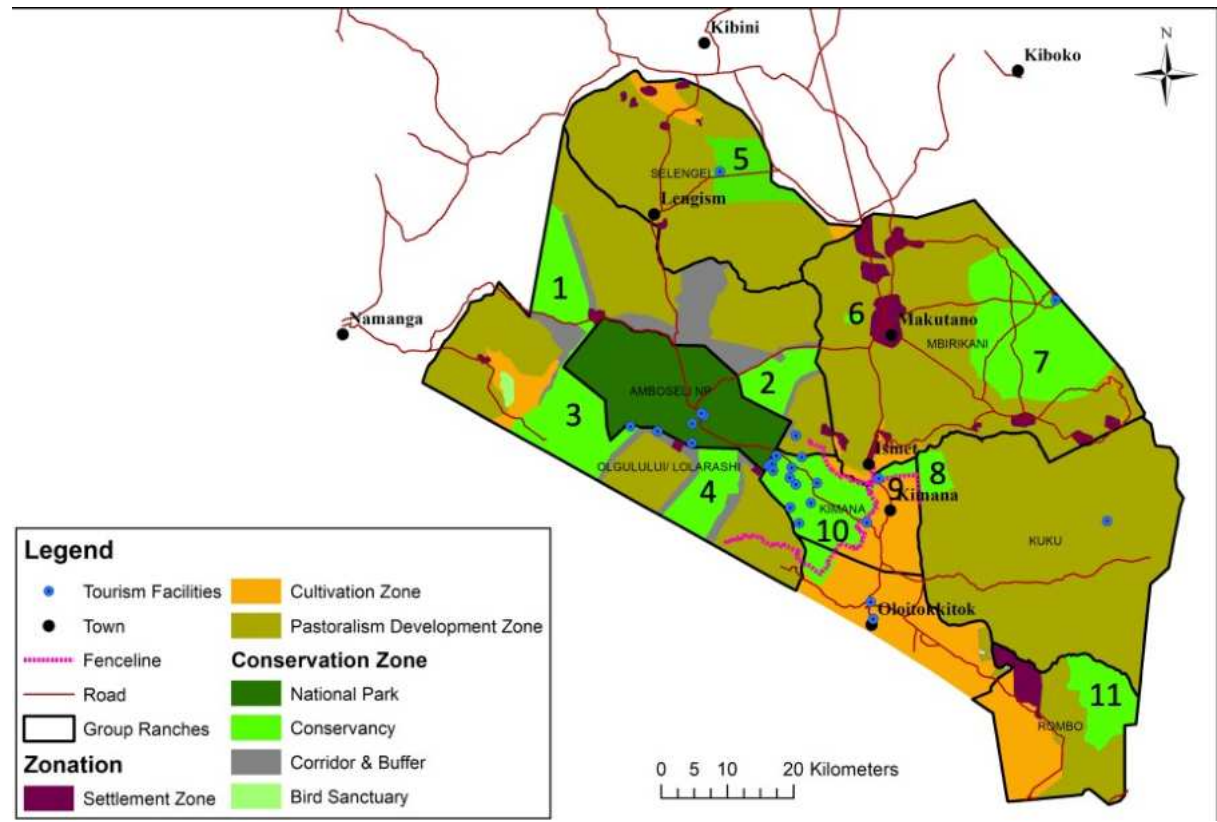




FIG Working Week 2024

19-24 May

Accra, Ghana

Your World, Our World:
Resilient Environment
and Sustainable
Resource Management
for All

FINDINGS.....1

Land use changes have contributed to 68% decline in wildlife numbers since 1977 (Ogutu, 2016)

Ecological mapping done at national level and not integrated with county land management activities

- Land use planning
- Survey and mapping of urban areas within the county
- Adjudication of group ranches (national function with significant county influence)
- Provision of consent to allocate/alienate public land
- Assessment of values for rating purposes (valuation roll)
- Change of use approvals and Development Control
- Unintegrated data sets managed at the county land registries.

ORGANISED BY



PLATINUM SPONSORS





FIG Working Week 2024

19-24 May

Accra, Ghana

Your World, Our World:
Resilient Environment
and Sustainable
Resource Management
for All

FINDINGS.....2

Lack of finalization of ecological mapping through physical planning, survey, reservation/gazettement/purchase/easement/lease and registration

Survey & allocation of ecologically sensitive areas in disregard to the law

On-going subdivision and sales along mapped wildlife migratory routes

Lack of up to-date data on subdivision surveys and change of use

Lack of assignment of responsibility for managing rangelands was lacking leading to land degradation





FIG Working Week 2024

19-24 May

Accra, Ghana

Your World, Our World:
Resilient Environment
and Sustainable
Resource Management
for All

PROSPECTS

1. Prudent, participatory, integrated land use planning and development control
2. Data integration in a National Land Information Management System
3. Responsible effective land administration and management
4. Multi-level, multi-stakeholder involvement – ecologists, politicians, communities, land administrators, policy makers
5. Enhanced Institutional arrangements and liaison with the Ministry of Lands
6. Meaningful incentives & application of legal instruments – Easements, Lease programmes, purchase/donation/transfer
7. Exploration of carbon markets including REDD and REDD+ in restoration of habitat including afforestation
8. Development of a Conservation Connectivity Strategy

ORGANISED BY



PLATINUM SPONSORS





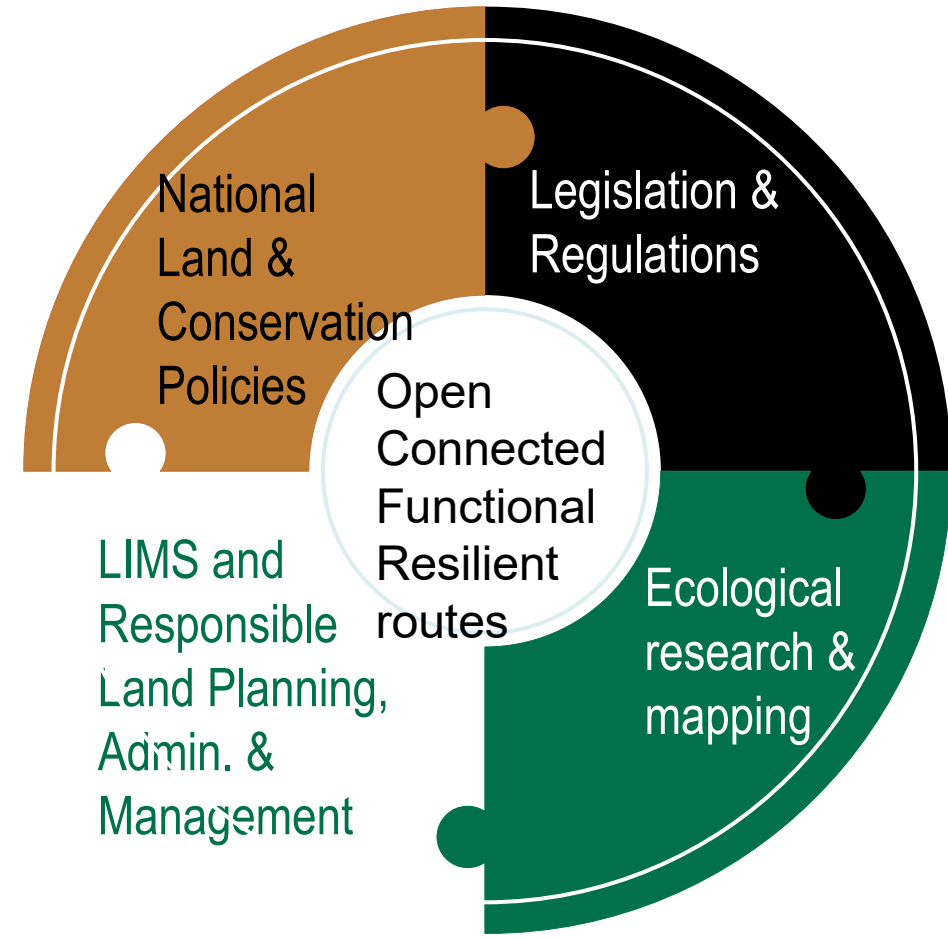
FIG Working Week 2024

19-24 May

Accra, Ghana

Your World, Our World:
Resilient Environment
and Sustainable
Resource Management
for All

CONCLUSION



ORGANISED BY



PLATINUM SPONSORS





FIG Working Week 2024

19-24 May

Accra, Ghana

Your World, Our World:
Resilient Environment
and Sustainable
Resource Management
for All

SUSTAINABLE DEVELOPMENT GOALS | International Federation of Surveyors supports the Sustainable Development Goals

Commission #7 & #8

Serving Society for the Benefit of People and Planet

