



"From the wisdom of the ages  
to the challenges of modern world"

# FIG WORKING WEEK 2015

## 17-21 MAY SOFIA BULGARIA

Organised by:   CHAMBER OF GRADUATED SURVEYORS

Platinum Sponsors:  




"From the wisdom of the ages  
to the challenges of modern world"

# FIG WORKING WEEK 2015

## 17-21 MAY SOFIA BULGARIA

### *Ensuring the Rapid Response to Change Ensuring the Surveyor of Tomorrow*



**Prof Chryssy Potsiou, FIG President**  
National Technical University of Athens  
School of Rural and Surveying Engineering,  
Greece  
[chryssy.potsiou@gmail.com](mailto:chryssy.potsiou@gmail.com)

Platinum Sponsors:  



"From the wisdom of the ages  
to the challenges of modern world"

**FIG WORKING WEEK 2015**  
**17-21 MAY SOFIA BULGARIA**

FIG has always acknowledged "change"  
as a reality of our world:

- In 1938: *the role of the surveyor in the social order of today.*
- 1990s: *information society; globalization; shaping the change; facing the challenges, engaging the challenges.*
- 2015: *respond to change; respond intelligently.*

*"Timing" is introduced as the crucial factor in our theme*



Photo by P.Laarakker FIG WW Abuja 2013



Platinum Sponsors:



"From the wisdom of the ages  
to the challenges of modern world"

**FIG WORKING WEEK 2015**  
**17-21 MAY SOFIA BULGARIA**

## Investigate the Change

Geospatial information is recognized as the tool to address issues like :

- Population growth
- Rapid urbanization
- Tendency of development to cluster within the coastal zones
- Rapid response to natural disasters
- Interconnectivity



Photo: Kathmandu Living Labs



Platinum Sponsors:

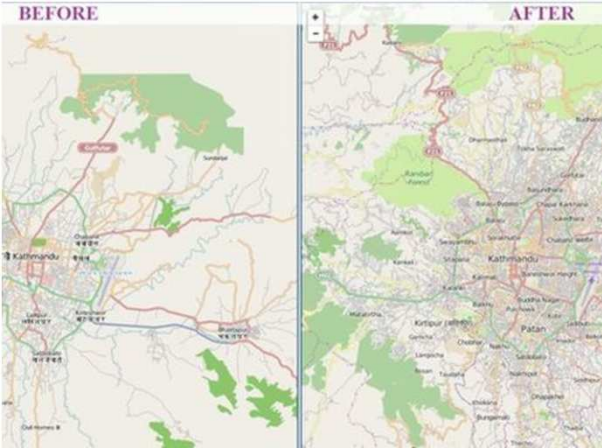




"From the wisdom of the ages to the challenges of modern world"

**FIG WORKING WEEK 2015**  
17-21 MAY SOFIA BULGARIA

## Nepal



Nama Raj Budhathoki who received a Ph.D. in crowdsourcing, open data and social and mobile media at the University of Illinois, had created a detailed map of Kathmandu using OSM before the earthquake hit.



Platinum Sponsors:



"From the wisdom of the ages to the challenges of modern world"

**FIG WORKING WEEK 2015**  
17-21 MAY SOFIA BULGARIA

## Changing economies, markets & societal needs: **security of tenure**

- The empowerment of *private property rights*
- Implementation of these rights
- Registration of property rights
  - *Provide secure ownership to land and real property, and*
  - *Support the operations of the property market*

Photo: GLTN



Platinum Sponsors:



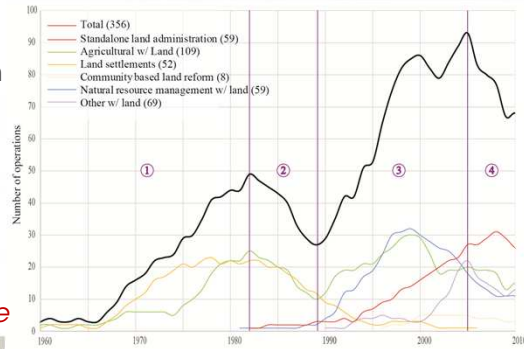


"From the wisdom of the ages to the challenges of modern world"

**FIG WORKING WEEK 2015**  
17-21 MAY SOFIA BULGARIA

## The World Bank land tenure projects

- The WB has financed land tenure projects for more than half a century
- More than US\$3.1 billion in total
- The ECA land reform US\$ 1.1 billion
- Land given at *low cost* or *free*



Source: The World Bank



Platinum Sponsors:

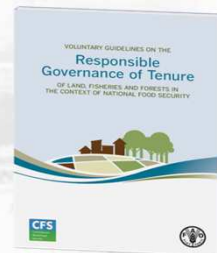


"From the wisdom of the ages to the challenges of modern world"

**FIG WORKING WEEK 2015**  
17-21 MAY SOFIA BULGARIA

## The VG on The Responsible Governance of Tenure (VGGT)

- FAO gave *strategic priority to the security of tenure*
- The implementation phase had two pillars:
  - Raising awareness through 10 regional conferences
  - Organizing national workshops to provide concrete proposals



Platinum Sponsors:



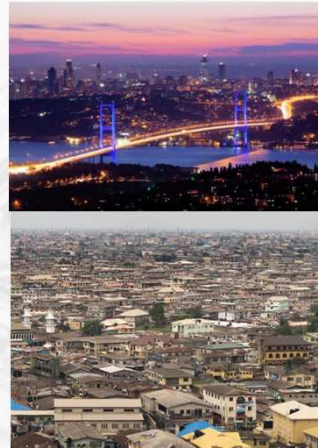


"From the wisdom of the ages  
to the challenges of modern world"

**FIG WORKING WEEK** 2015  
**17-21 MAY SOFIA BULGARIA**

## Urbanization is a major global change

- Concentration often produces *economies of scale* and leads to social and economic benefits
- It is also a matter of human rights that *people are free to choose* where they will live and work
- Population growth at a rate of **5 million** every month
- *Limited capacity* of authorities to provide **affordable urban land & affordable housing**



Platinum Sponsors:



"From the wisdom of the ages  
to the challenges of modern world"

**FIG WORKING WEEK** 2015  
**17-21 MAY SOFIA BULGARIA**

## A growing global housing gap

- Unplanned areas with disaster risks; *low-paying* job opportunities.
- Management needs *technical skill* but also *expertise* in social, economic and environmental aspects.
- Many existing tools *are not efficient* in providing pragmatic land use planning solutions



Source: UN-HABITAT



Platinum Sponsors:





"From the wisdom of the ages  
to the challenges of modern world"

**FIG WORKING WEEK** 2015  
**17-21 MAY SOFIA BULGARIA**

## Lack of affordable housing is a reality even in the developed world

- *Shrinkage of labor force*
- No business investment where no affordable housing for workers
- Job location vs distant housing
- A disappearing *middle class*?
- Social problems due to lack of quality affordable housing



Source: Joint Center for  
Housing Studies of  
Harvard University



Platinum Sponsors:



"From the wisdom of the ages  
to the challenges of modern world"

**FIG WORKING WEEK** 2015  
**17-21 MAY SOFIA BULGARIA**

## Formalizing the Informal

- Many in the UNECE region live in informal settlements
- housing is not only a shelter but a *tool to create wealth*
- Unclear property rights & use regulations cause "*uncertainty*", "*economic exclusion*" and "*social unrest*"

UNITED NATIONS ECONOMIC COMMISSION FOR EUROPE  
INTERNATIONAL FEDERATION OF SURVEYORS

### Formalizing the Informal

Challenges and Opportunities of Informal Settlements in South-East Europe



Platinum Sponsors:





"From the wisdom of the ages to the challenges of modern world"

**FIG WORKING WEEK 2015**  
**17-21 MAY SOFIA BULGARIA**

## The role of private sector

- A country's housing policy is connected to its basic infrastructure; development policy; its general land policy
- A need for *increased public funds*
- A need for *private sector participation*
- The *role of the state*: from provider of growth to an *enabler* of growth

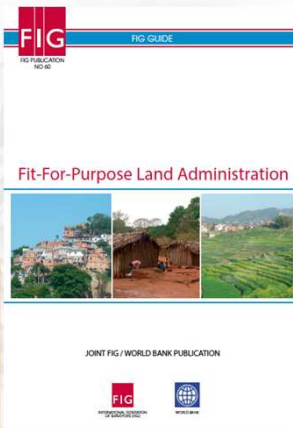


"From the wisdom of the ages to the challenges of modern world"

**FIG WORKING WEEK 2015**  
**17-21 MAY SOFIA BULGARIA**

## Fit-For-Purpose approaches: the role of Surveyors

- *Value of cadastre for a national economy*
- Most developing countries have less than 30% cadastral coverage
- Innovative, fit-for-purpose universal parcel recordation



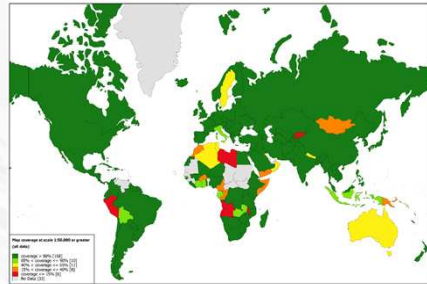


"From the wisdom of the ages to the challenges of modern world"

**FIG WORKING WEEK 2015**  
**17-21 MAY SOFIA BULGARIA**

## Changing Technology supports mapping

- Improvement in information technology: digital electronics; *big data management & distribution*.
- 1986: the average age of maps varied from 20 to 50 years.  
33.5% of the world at 1:25,000  
65.6% at a scale of 1:50,000
- 2012: globally the availability of mapping at 1:50,000 is high
- A remaining global need for large scale mapping*



(source: Konecny, 2015)



"From the wisdom of the ages to the challenges of modern world"

**FIG WORKING WEEK 2015**  
**17-21 MAY SOFIA BULGARIA**

## Fast Large-Scale Mapping

- The current rise of *UAVs with cameras and laser scanners*
- Developments in point cloud processing*
- High resolution orthophotos and 2D site maps; 3D maps that can be navigated online; 2D and 3D measurements; *change detection*.







"From the wisdom of the ages to the challenges of modern world"

FIG WORKING WEEK 2015  
17-21 MAY SOFIA BULGARIA

## Changing Technology

- Technical developments also include *airborne Lidar*
- Advanced *aerial multi-camera*
- Dense image matching*
- Modernization of software* to be more 'app-like'
- Interconnectivity* (total stations, GNSS, mobile devices, etc)

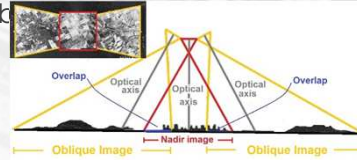
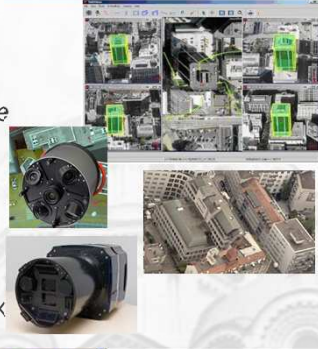


FIG Congress 2014

Platinum Sponsors:



"From the wisdom of the ages to the challenges of modern world"

FIG WORKING WEEK 2015  
17-21 MAY SOFIA BULGARIA

## Changing Culture-open data

- Interconnectivity creates new **security concerns**, but it offers **huge benefits**.
- The innovative process of **crowdsourcing**
- Tendency towards **more open data**
- A need for **national information strategies**



Platinum Sponsors:



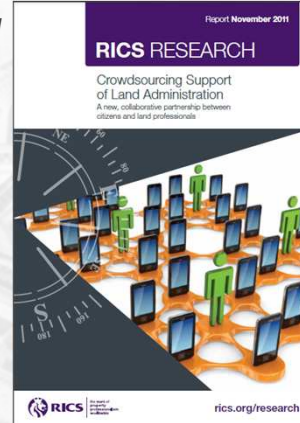


"From the wisdom of the ages to the challenges of modern world"

**FIG WORKING WEEK 2015**  
**17-21 MAY SOFIA BULGARIA**

## Changing culture-authoritative data free of charge

- There is a *changing culture for web-based authoritative spatial information*
- how much of that can governments afford?*
- Authoritative data can be provided and assured by government agencies but also by crowdsourcing but always *with the engagement of surveyors*

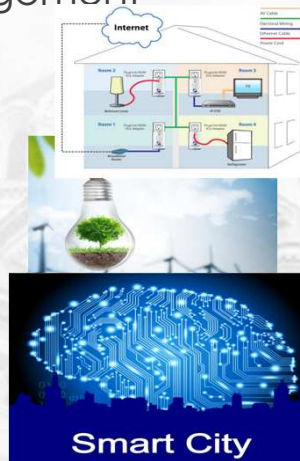


"From the wisdom of the ages to the challenges of modern world"

**FIG WORKING WEEK 2015**  
**17-21 MAY SOFIA BULGARIA**

## Spatial Information in city management

- Technology transforming cities into *smart cities*
- Cities will be connected and will interact with people freely
- A smart city is a developed urban area that creates sustainable economic development and high quality of life by excelling in multiple key areas: economy, mobility, environment, people, living, and government*





"From the wisdom of the ages  
to the challenges of modern world"

**FIG WORKING WEEK 2015**  
**17-21 MAY SOFIA BULGARIA**

## Surveyors in city management

- Professionals in geoinformatics are expected to develop expertise and capacity building in reliable and reusable information provision.
  - DSMs
  - GIS
  - UAV apps
  - mobile mapping services
  - 3d/4d city models
  - smart "apps"
  - Building Information Modeling (BIM)
  - measurement standards
  - installation of sensors in smart buildings
  - the Internet of Things
  - using sensors in web 2.0
  - mobile social sensing



"From the wisdom of the ages  
to the challenges of modern world"

**FIG WORKING WEEK 2015**  
**17-21 MAY SOFIA BULGARIA**

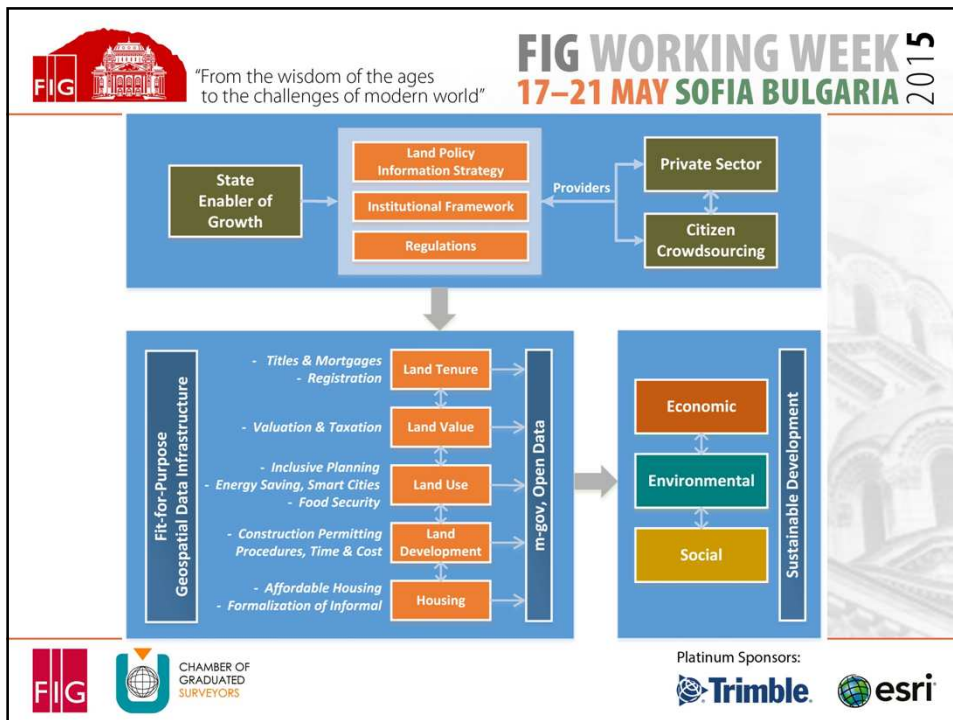
## Surveyors in city management

- Global construction volume is expected to be US\$ 12 trillion by 2020.
- BIM in activities such as cost planning and budget estimating, value management, risk management and calculation, bid documentation, commercial management and contract administration, dispute resolution, etc
- BIM enhances team collaboration and understanding among various professionals as well as better information management, reduction of errors and time requirements.
- *Combining BIM with Land Administration*



Source: SeeLian Ong





**FIG WORKING WEEK 2015**  
17-21 MAY SOFIA BULGARIA

"From the wisdom of the ages to the challenges of modern world"

## The response

- In the urbanization and globalization era, a **globalization of science** is taking place
- As competition increases surveyors must maintain high **technical education** & in-depth **technical research**, & should be prepared to cope with large amounts of **spatial information**
- Cooperation with other professionals; **solution functionality, reliability, affordability**
- The relationship between **quality and cost**

XXV FIG CONGRESS 2014

Platinum Sponsors: Trimble, esri

FIG CHAMBER OF GRADUATED SURVEYORS



"From the wisdom of the ages  
to the challenges of modern world"

**FIG WORKING WEEK** 2015  
**17-21 MAY SOFIA BULGARIA**

## Our Vision

- It is urgent that the surveying profession will *think ahead*, predict future changes, *foresee the requirements of the next generation of the public and structure the way ahead*
- It is the purpose of FIG to lead "global" surveyors capable to contribute to an ambitious *post-2015 global sustainable development agenda*
- During the 2015-2018 time period FIG, its council and commissions, member associations, academic members, YSs, CDN, affiliate and corporate members will strive to achieve the FIG Vision *to contribute to the post 2015 global sustainable development agenda*



Platinum Sponsors:



"From the wisdom of the ages  
to the challenges of modern world"

**FIG WORKING WEEK** 2015  
**17-21 MAY SOFIA BULGARIA**

## We all thank You



Platinum Sponsors:

