

Organized by:



INTERNATIONAL
FEDERATION OF
SURVEYORS



NIGERIAN
INSTITUTION
OF SURVEYORS

SUMMARY PRESENTATION

ENVIRONMENT FOR SUSTAINABILITY

FIG Working Week 2013 Abuja, Nigeria 6-10 May

Platinum sponsors:



INTERGRAPH



THE FEDERAL CAPITAL
TERRITORY ADMINISTRATION
(FCTA)



Gold sponsors:

Organized by:



INTERNATIONAL
FEDERATION OF
SURVEYORS



NIGERIAN
INSTITUTION
OF SURVEYORS

Thanks for your attendance



Photo courtesy of Peter Laarakker

Platinum sponsors:



INTERGRAPH



THE FEDERAL CAPITAL
TERRITORY ADMINISTRATION
(FCTA)



Thanks for Participating
(FIG/GLTN Surveyor Generals/Director Generals Roundtable)



Platinum sponsors:



Gold sponsors:



Thanks for Mentoring

Platinum sponsors:



Gold sponsors:

Org

Thanks for the Friendship

Platinum sponsors:

Gold sponsors:

esri Trimble Sivan design INTERGRAPH Leica Geosystems THE FEDERAL CAPITAL TERRITORY ADMINISTRATI (FCTA) FIG KUALA LUMPUR 2014

Organized by:

Thanks for the Support

Platinum sponsors:

Gold sponsors:

esri Trimble Sivan design INTERGRAPH Leica Geosystems THE FEDERAL CAPITAL TERRITORY ADMINISTRATI (FCTA) FIG KUALA LUMPUR 2014





Thanks for Entertaining

Platinum sponsors:       

The AU Declaration on land: a call to use the F&G (cont.)

- **RECs**
 - Convene periodic regional land policy platforms for experience sharing
 - Capture/address land issues within their respective common agricultural policy frameworks
- **Member states**
 - Review their land sector with a view to develop comprehensive policies
 - Build adequate capacity (human, technical, financial capacity for land policy
 - Make use of the F&G as a valid tool to guide their national land policy process
- **CSOs**
 - Participation (Land surveyors?)

Dr Hubert Quedrigo, UNECA, AU LPI

Platinum sponsors:       

(d) Frameworks and practices: role of surveying community?

1. **Land Policy Initiative in Africa: Frameworks and guidelines for land policy: AUC/AUC/UNECA**
2. **Voluntary Guidelines** (on the Responsible Governance of Tenure of Land, Fisheries and Forests in the Context of Food Security): CFS/FAO)
3. **LADM (ISO 19152 Standard with STDM as subset)**
4. **LGAF (land Governance Assessment Framework) WB in over 12 countries**
5. **Upcoming land reform and land administration reform in sub-Saharan Africa (WB/ Frack Byamugisha)**

Surveyors cannot longer afford to ignore.....Needs to engage



FIG Working Week 2013
Abuja, Nigeria 6-10 May 2013



Dr Remy Seitchiping, GLTN, UN-Habitat

Platinum sponsors:



Concluding Remark (Cont'd)

POA137

- There is equally a need for attitudinal change by the political leadership and land sector professions.
 - How can those benefiting from the very weak system of land administration allow a change in the system?
- Strong need for resource mobilization
- Development of a National Mapping Policy (NMP) is imperative
- Development of Geospatial Information (GI) Policy is equally imperative
- However, governance by itself is nothing, approaches to governance is everything.

□ *Thank you for your attention.*



The continuum of land rights

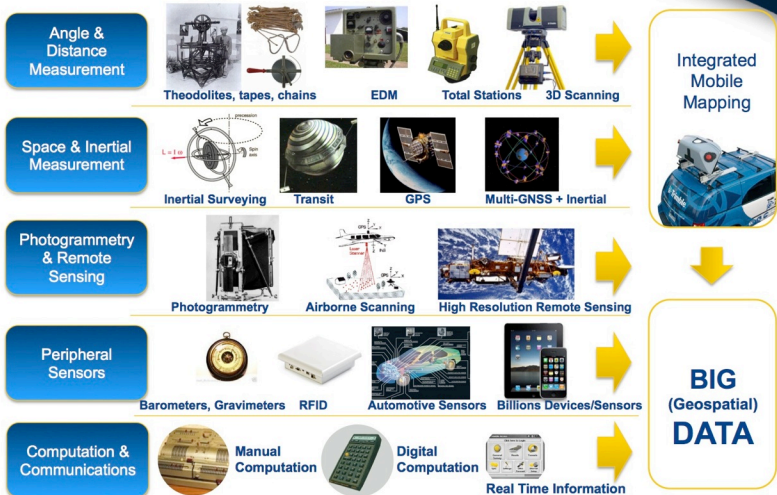
A CENTRAL CONCEPT IN THE PARADIGM SHIFT

- Rights to land are regarded as lying on a **continuum**
- Tenure can take a variety of forms along this continuum
- In reality, the rights do not lie on a single line, and they may overlap with one another
- Registered freehold (at the formal end of the continuum) should not be seen as the preferred or ultimate form – it is one of a number of appropriate and legitimate forms (customary, leasehold, group tenure...)
- The most appropriate form depends on context

Jean du Plessis, GLTN, UN-Habitat



Technology Convergence



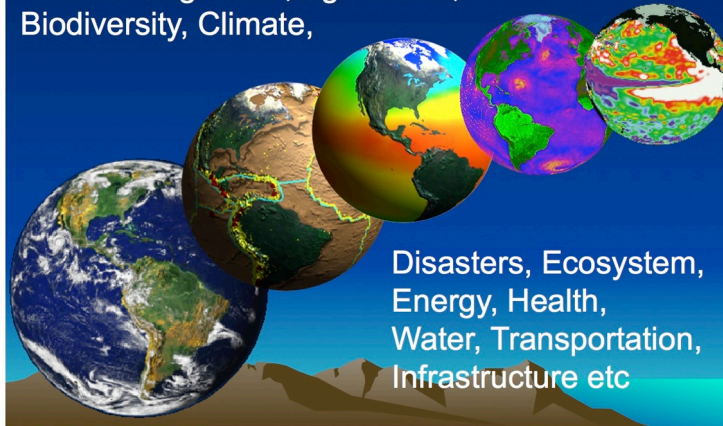
Pete Large, Trimble Navigation



C

Geoinformation for Societal Benefit

Land Management, Agriculture,
Biodiversity, Climate,



Disasters, Ecosystem,
Energy, Health,
Water, Transportation,
Infrastructure etc

Dr Hussein Omar Farah, RCMRD

Platinum sponsors:



Gold sponsors:

TECHNOLOGICAL INNOVATIONS AND SYSTEMS

In Lagos State for example, the area mapped measures approximately 4000 sq. km. covering both land areas and water bodies, creeks, lagoon and coastline of Lagos State.

- The Lagos State project designed, created and implemented a Database which meets ISO/Federal Geographic Data Committee (FGDC) standards.
- Mapping and GIS Projects have revolutionised the practice by Surveyors, town planners, GIS practitioners and Engineers in the States that have mapped in a way never imagined.
- The Lagos state mapping has made land management more effective and efficient.
- GIS practitioners execute their projects faster and better since the base data for their practice is available.

The Mapping Exercises have specifically addressed the following areas

- Land Registration and Management
- Increased Income Generation
- Tourism
- Agriculture
- Transportation
- Physical Planning
- Security
- Environmental Monitoring and Control
- Mineral Resources Development
- Population Census



Office of the Surveyor-General of the Federation

Prof Peter Nwilo, OSFOG Nigeria

Platinum sponsors:



Gold sponsors:



GLTN
GLOBAL LAND TOOL NETWORK



FIG
YOUNG
SURVEYORS



The FIG Foundation

Social Tenure Domain Model Training the Trainers Workshop Abuja, Nigeria, May 4th – 6th 2013



2013 FIG Working Week
"Environment for Sustainability"
Abuja, Nigeria, 4th – 11th 2013



Organized by:



INTERNATIONAL
FEDERATION OF
SURVEYORS



Social Tenure Domain Model Training the Trainers Workshop Abuja, Nigeria, May 4th – 6th 2013



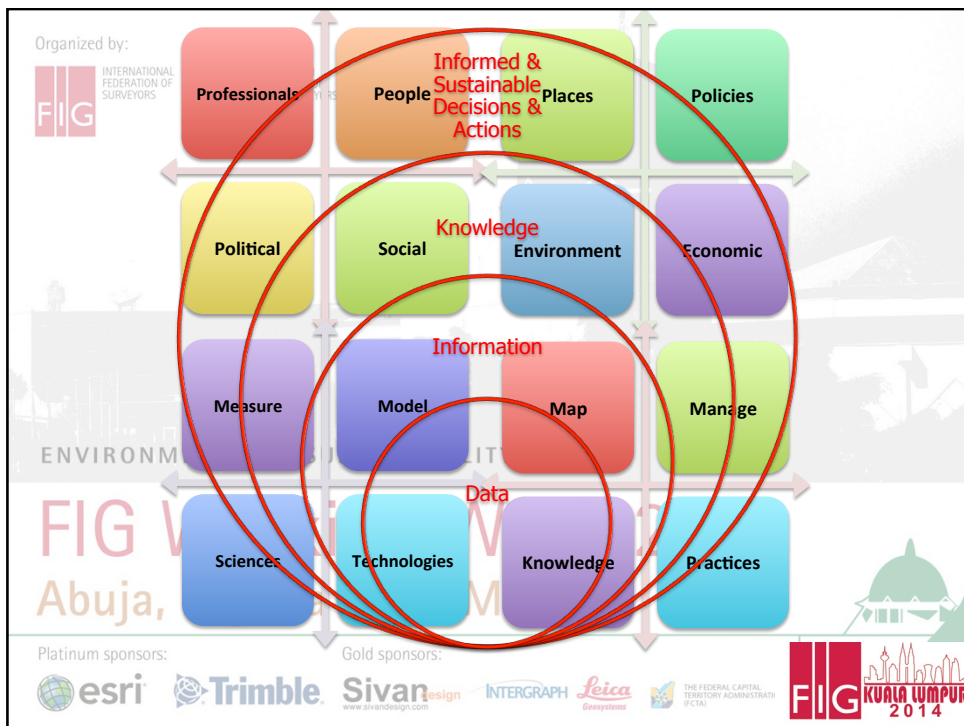
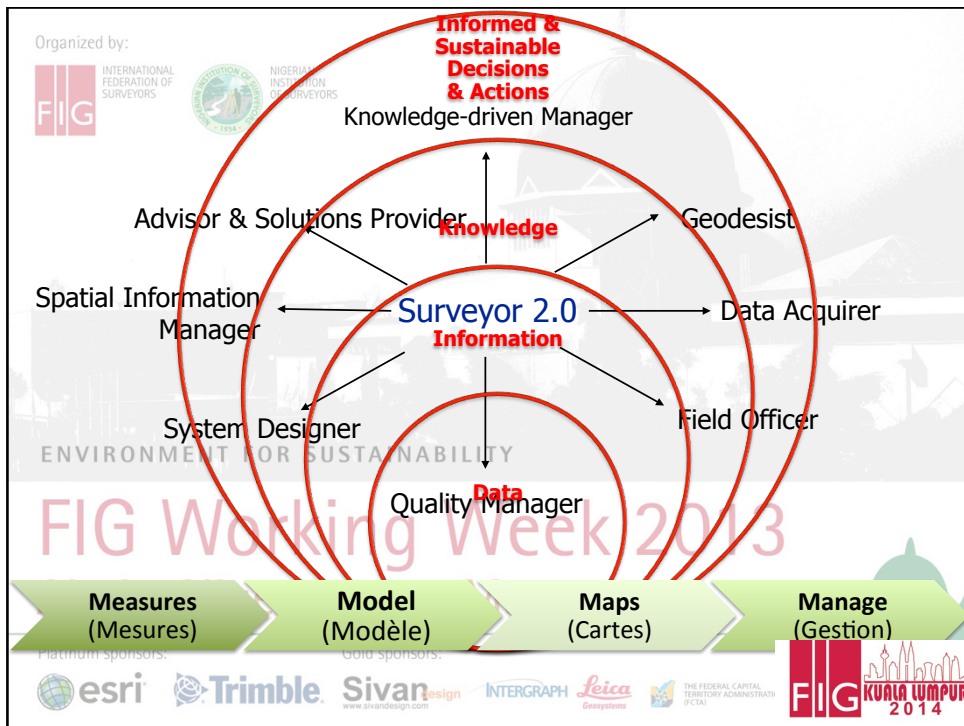
Roles of younger surveying professionals, communities and institutions

ENVIRONMENT FOR
"Fit-for-
purposes"
people/land
relationships



Platinum sponsors:





2011 - 2014 Work Plan:
Engaging the Challenge: Enhancing the Relevance

Engaging the Membership

- Communications
- Commissions
- Conference Structures

Engaging Global Challenges

- Collaborating
- Contributing
- Cascading

Enhancing the Significance and Relevance towards the betterment

- Society
- Environment
- Economy

Member associations
Affiliates
Corporate members
Correspondent members
Academic members

ENVIRONMENTAL SUSTAINABILITY

Vision
FIG Working Week 2013
 A Profession, armed with knowledge and best practices, extending the usefulness of surveying for the benefit of society, environment and economy, increasingly positioned in significance and relevance, next door to everywhere.

Platinum sponsors:

Gold sponsors:

FIG YOUNG SURVEYORS

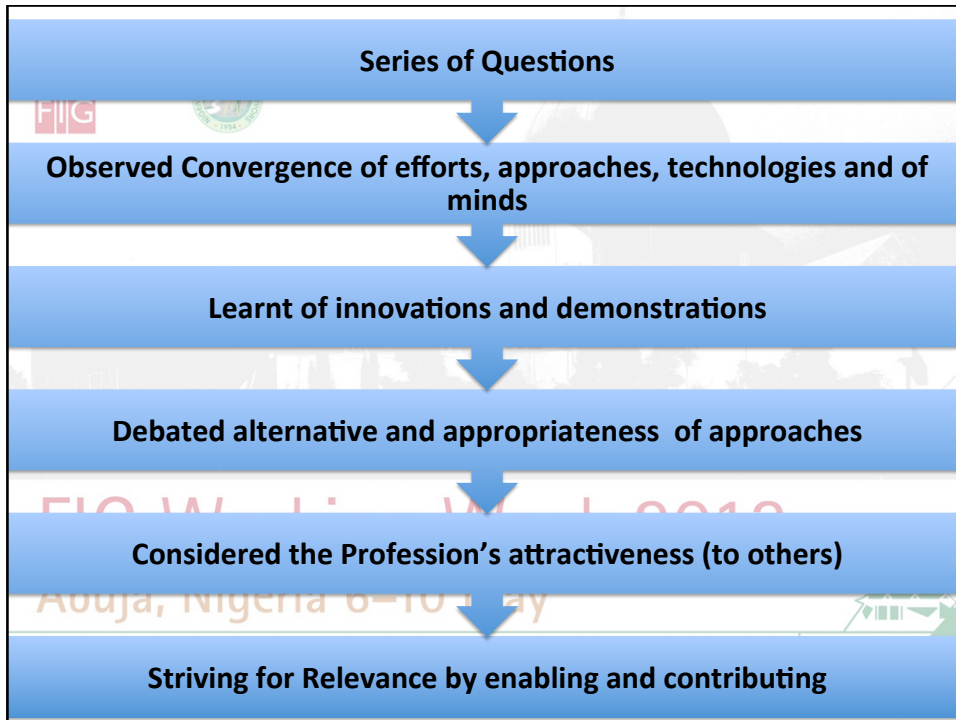
Median Age in Years	1950	1980	2010	2050	2100
Latin America and Caribbean	20.1	20.1	27.9	41.0	46.6
Africa	19.2	17.5	19.8	26.4	35.9
World	23.9	23.1	29.4	37.9	41.9

(United Nations Department of Economic and Social Affairs)

Abuja, Nigeria 6-10 May
addressing the needs of Youth as a broad category within Society and Economy.

Platinum sponsors:

Gold sponsors:



Organized by:

Supporting Professional and Capacity Development

- Locally initiated and driven capacity development initiatives.
- Directly supported by FIG's member associations, affiliates and academic members.
- FIG global membership should contribute.
- FIG coordinate support and collaborate with regional and linguistics structures within FIG, sister organizations and partners
- Medium term work plan with partnering agencies.

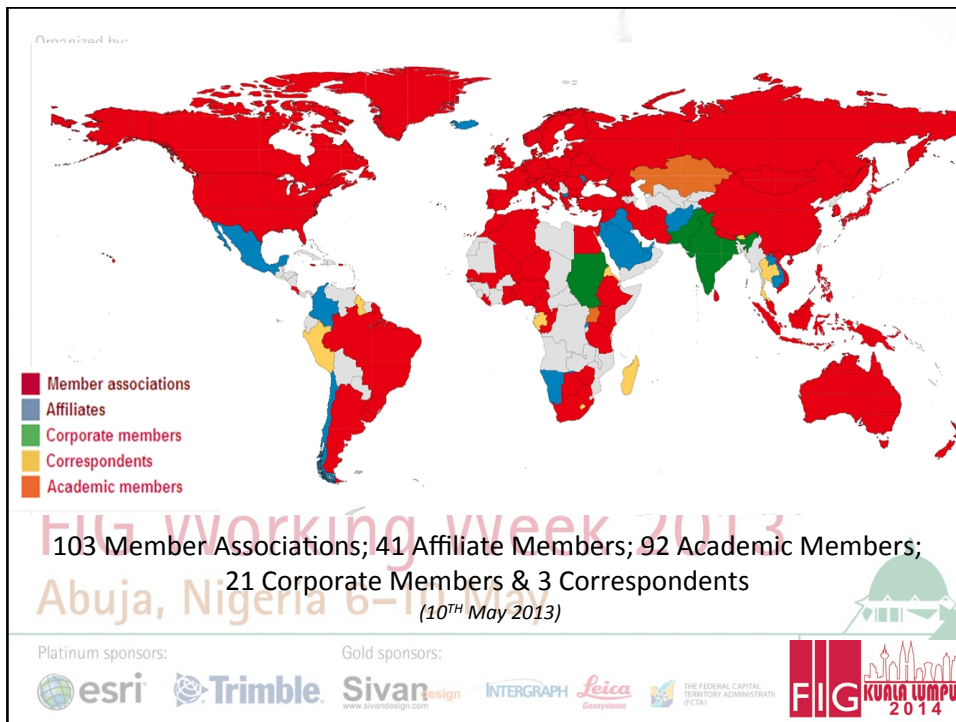
After McLaren, Lemmen & Steudler, 2013

FIG Working Week 2013

Abuja, Nigeria 6–10 May

Platinum sponsors:

Gold sponsors:



Organized by:

37th GA (2014) is expected to be-

- lengthy, to take two full days
- have end of term reports by Commissions, Networks, Task Forces, Permanent Institution, Foundation and Council;
- usual considerations and decisions on the business of the Federation;
- proposed amendments of FIG Statutes to be voted upon
- select the venue for 2017 Working Week and 2018 Congress.
- select two VPs and the President for 2015 - 2018 term of office.

FIG Working Week 2013
 Abuja, Nigeria 6-10 May

Platinum sponsors:

Gold sponsors:



XXV FIG Congress

"Engaging the Challenges, Enhancing the Relevance"
16 - 21 JUNE 2014, MALAYSIA

XXV FIG 2014 Congress-

2nd Young Surveyors Conference will be held during the Congress week at a venue that is within walking distance to the Congress venue

(The proposed surveying students/undergraduate conference is not certain (*the last semester examination week at our Partner University as it was meant to be a residential program for these students*))

Organisers

Principal Supporters

Supported by

Platinum Sponsors

Website: www.fig.net/fig2014