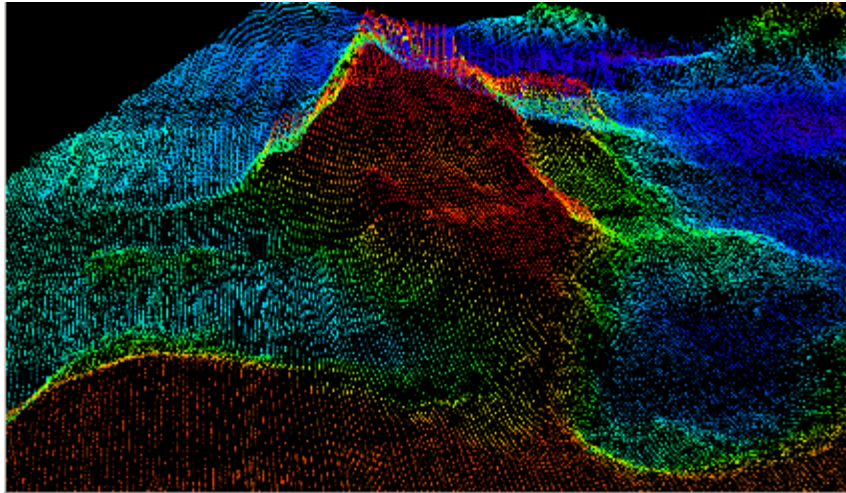
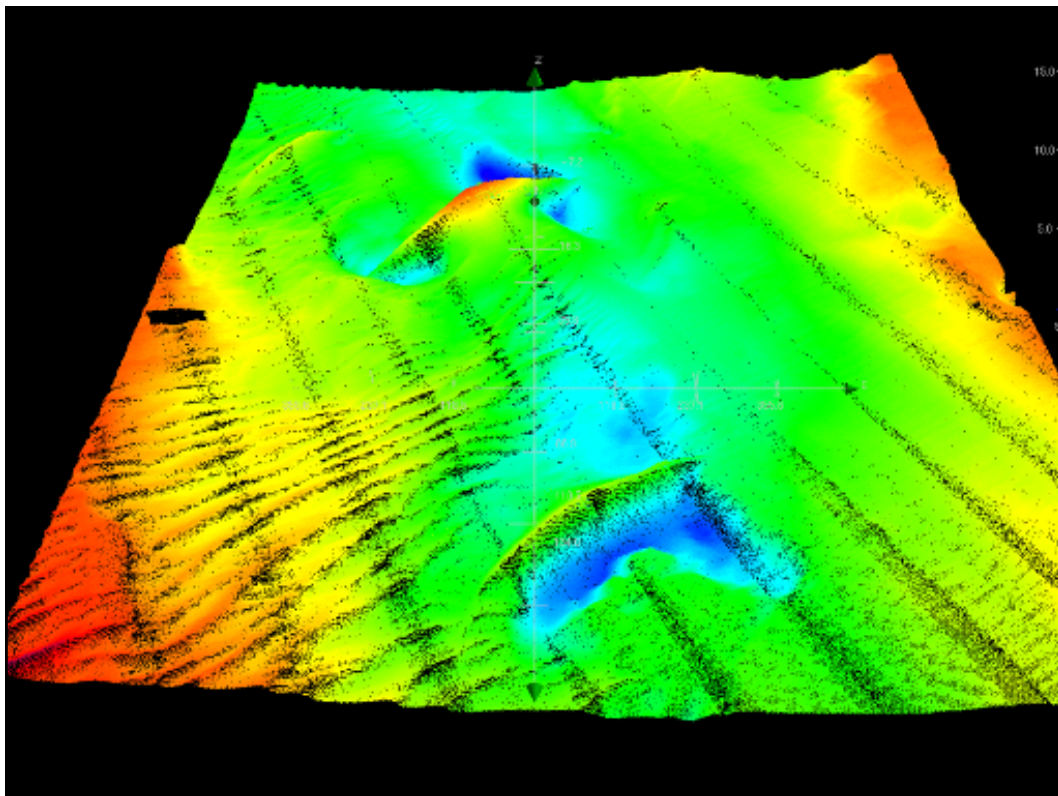


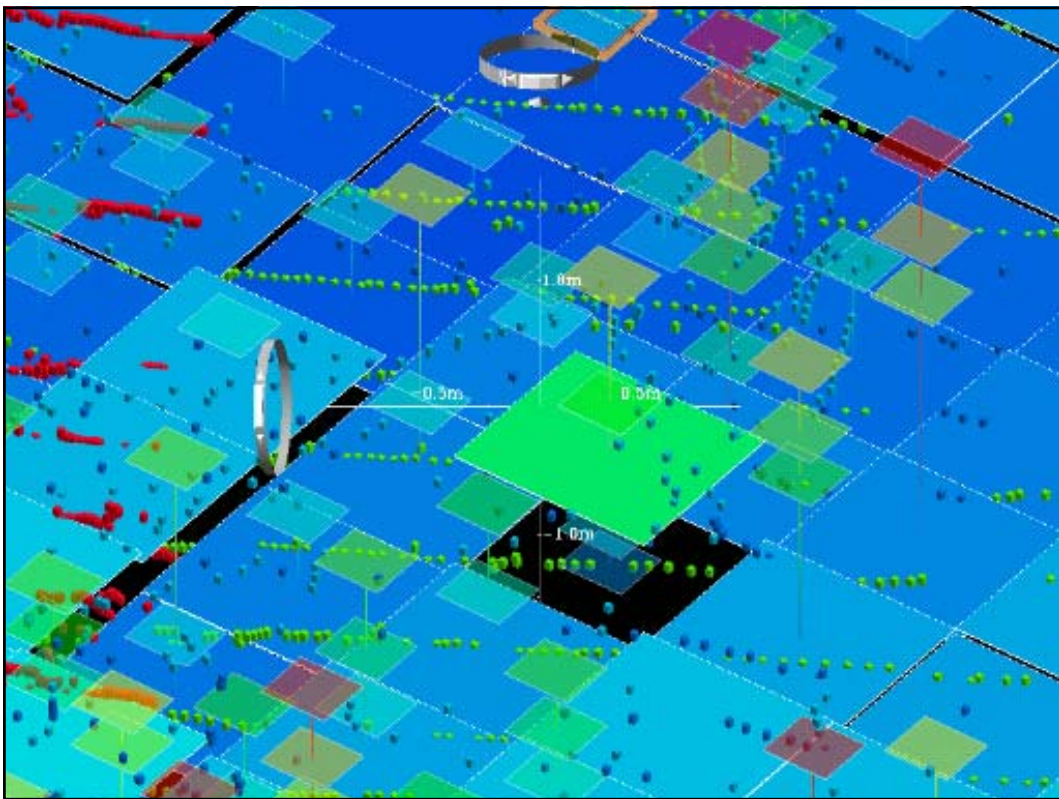
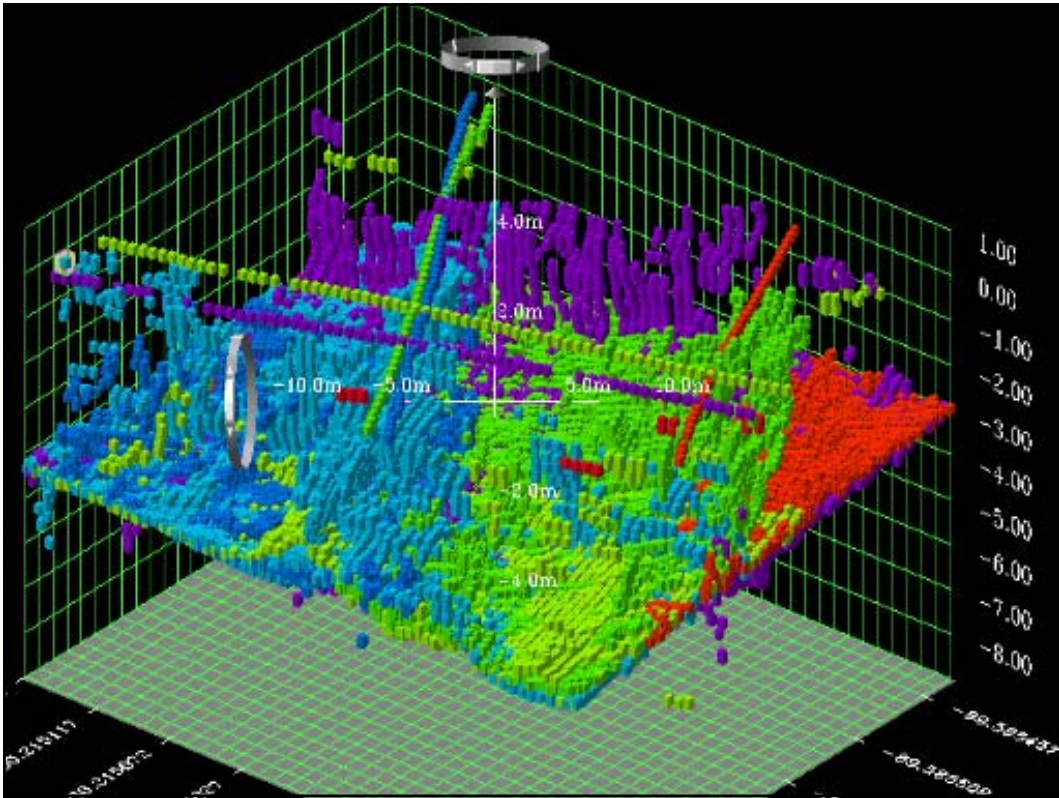
## FS20 Total Propagated Uncertainty, Does it Reflect Reality?



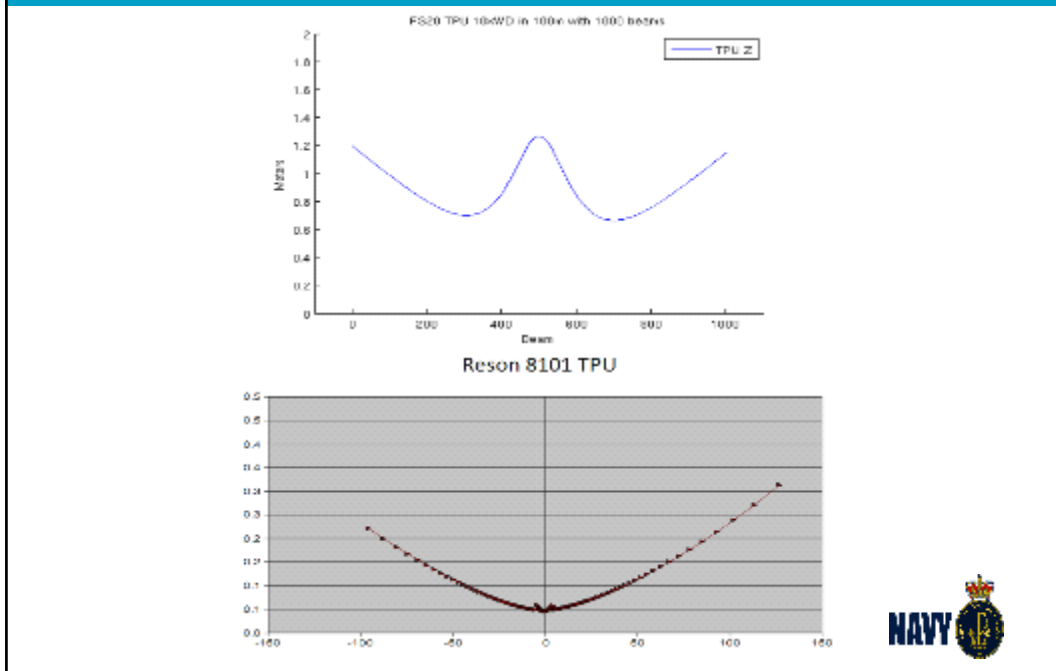
Lieutenant Commander Dean Battilana, RAN

Lieutenant Geoff Lawes, RAN

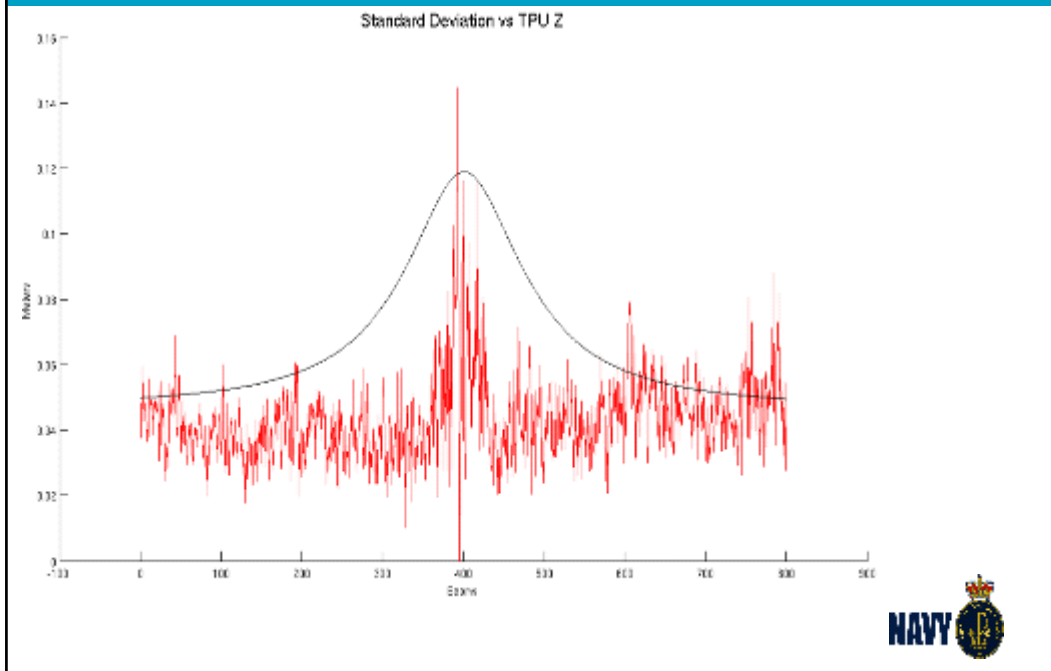




## How different are the TPU?



## Findings



## Implications

- FS20 TPU does reflect the performance of the Sonar.
- Water depth multiples beyond the normal 400% used by beam forming sonars is possible with little performance degradation.
- FS20 TPU can be used in conjunction with area based statistical analysis tools.



