



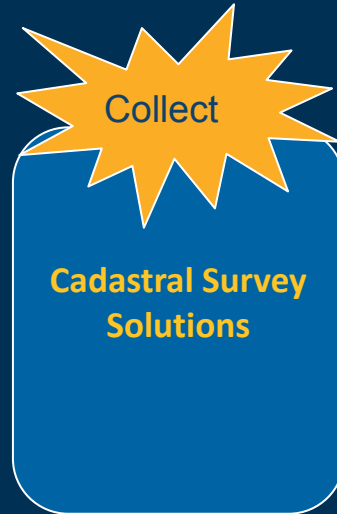
FIG Commission 7 2022 Annual Meeting

October, 2022

Markus Koper | Trimble Land Administration

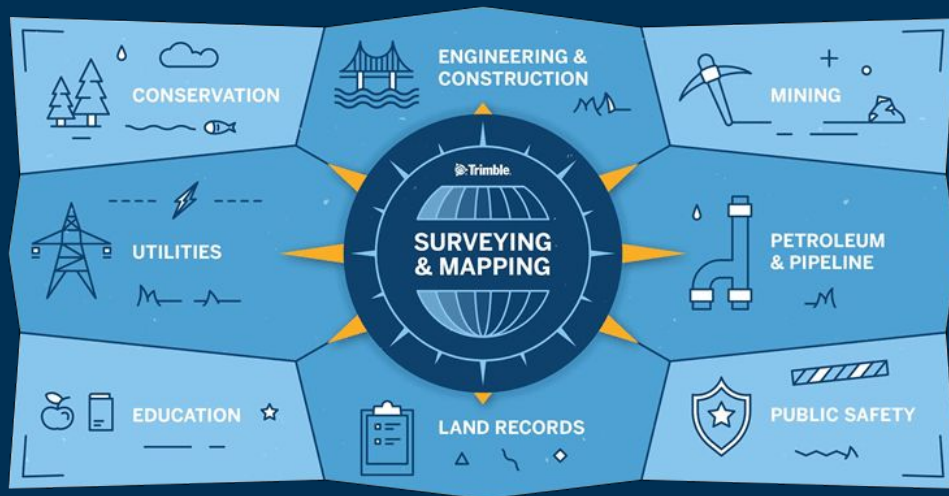
About Trimble Land Administration

- Part of the Geospatial Sector at Trimble
- *“Transform the way the world collects and manages land information”*



Geospatial Platform Strategy

Trimble's Geospatial platform enables our surveying and mapping customers to connect the physical earth with the digital world in a wide variety of industries, transforming the way the world works.



Geospatial Platform Strategy

The Trimble Geospatial platform consists of innovative hardware, software and correction services that enable multiple industry workflows





Trimble Cadastral Survey Solutions

System of record



Office Preparation



Fieldwork



Office Processing



System of record



Trimble Cadastral Solution



Trimble Business Center
Trimble Connect



Trimble Access
Trimble Penmap



Improving the regional cadastral survey workflows

Regional cadastral requirements

Measurement workflows

Measurement processing

Reporting

Deliverables

API's and Interfaces

Trimble
Geospatial
Technology

World's best survey solutions for cadastral data collection and processing (**Hard and Software**), supporting full digital workflows



Trimble's Fit-for-Purpose Solution



PENMAP ANDROID DATA COLLECTION Land Registry Software

Field data collection for everyone
Easy to use, map based, STDM / LADM
compliant



ANDROID OS FIELD DEVICES Affordable Data Collectors

Bring Your Own Device - Android devices are
inexpensive and offers a performance and
flexibility



TRIMBLE CATALYST GNSS Positioning Concept

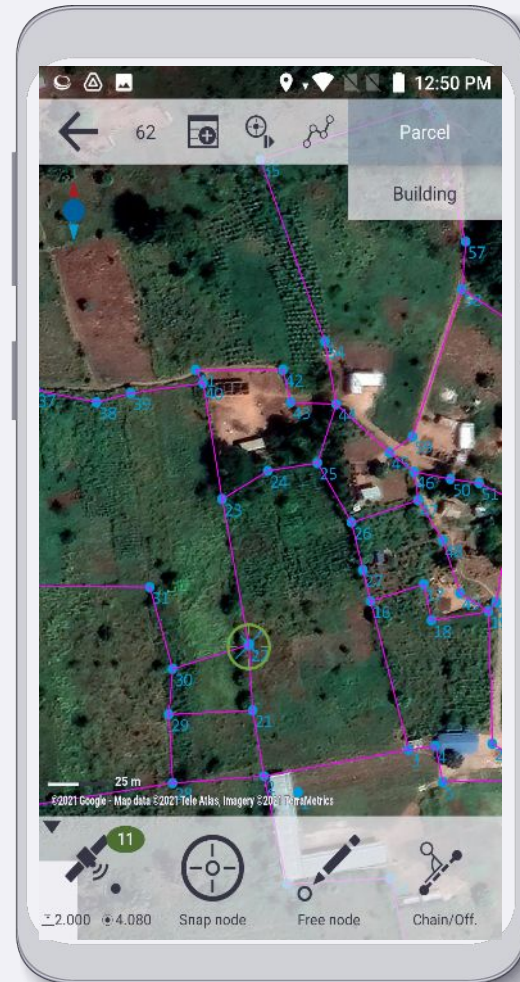
Low cost GNSS antenna and correction
service on demand - worldwide



Trimble Penmap Android

Fit-For-Purpose Data Collection

- Easy to Use
- Flexible
- Background Data
- Collect & Edit
- GNSS
- STDM / LADM



Trimble Penmap

Land Administration Data Collection

Map: Graphic & GIS Data

- Parcel

Formbased - Table Data

- Person

Relationship - Map & Formbased

- Tenure

Flexible / Professional / Easy-to-use

13:51 Documents

Social Tenure

Tenure Type
Owner

Person [1..1]
Leia (a0c..a5d)

Tenure share
100

Validity Start
2022-09-30

Validity End
2022-09-30

Parcel [1..1]
P6 (946..6cf)

Dispute [0..n]
No Dispute - No Dispute
(237 554)

Cancel Save

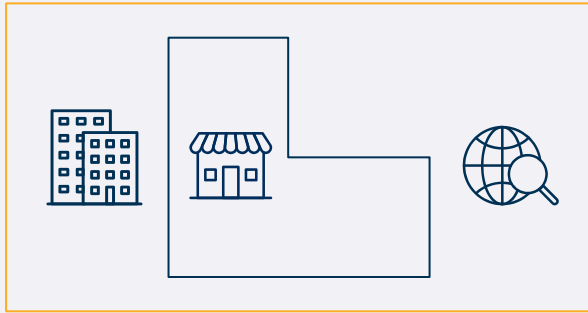


LADM field data collection

Spatial Data - Non Spatial Data - Relationships

SPATIAL DATA:

Parcels, Buildings, Agriculture Fields etc.



Map: Graphic and GIS data

NON-SPATIAL DATA:

Persons, Parties, Legal Entities etc.



Formbased - Table data

Relation



Relationship 1:n

Owner, Tenant, Share etc.



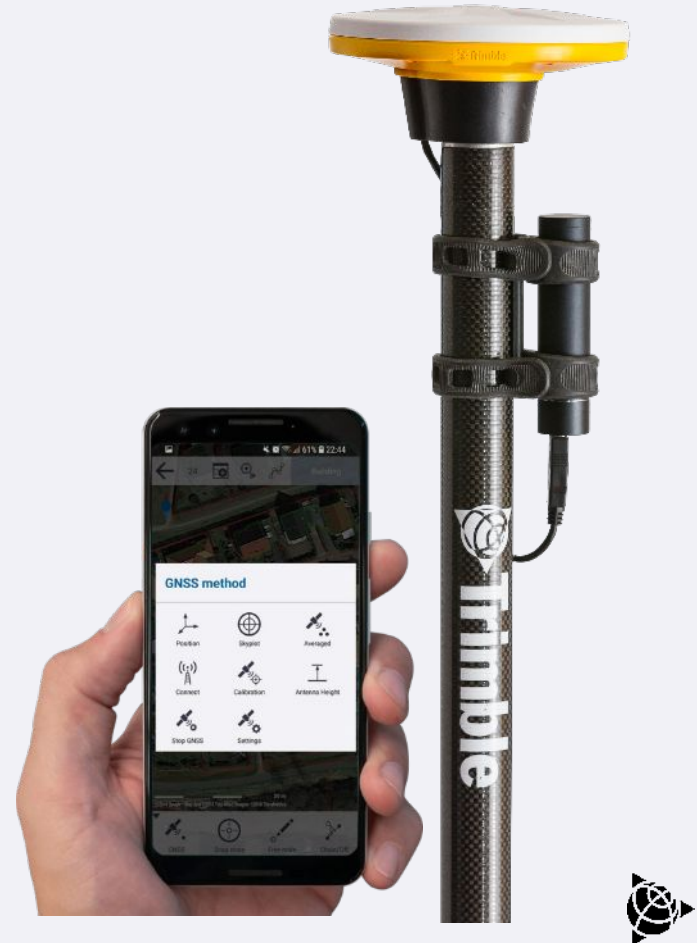
Trimble Catalyst - GNSS Positioning-as-a-service

DA2 - GNSS Receiver

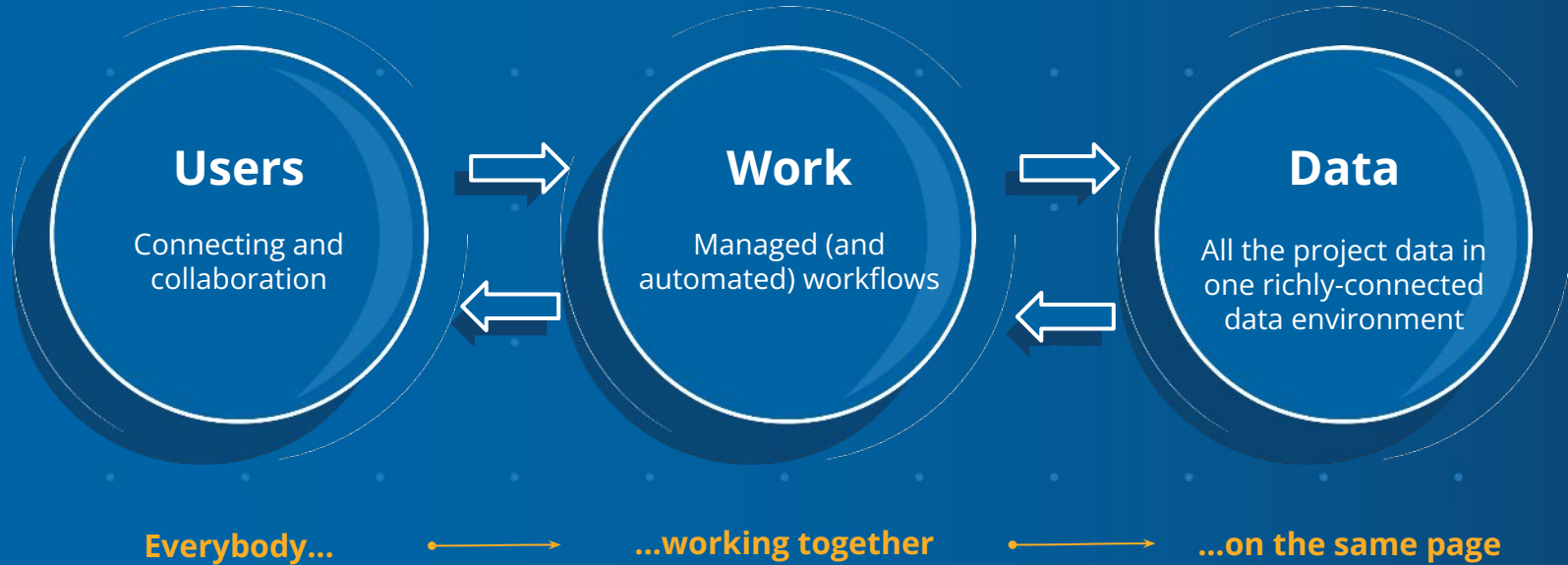
AND

Trimble Correction Service

- Worldwide available - up to **“cm accuracy”**
 - In connected and unconnected areas
- Scalable for individuals, small teams, and large crews
- Inexpensive, Flexible
- Simple to use - Plug and Play



Connecting the physical and digital worlds



Thank You

Trimble Land Administration

For Questions or Feedback please contact:
markus_koper@trimble.com

www.trimble.com

THANK YOU TAKK merci

GRAZIE VINAKA TERIMA KASIH

감사합니다

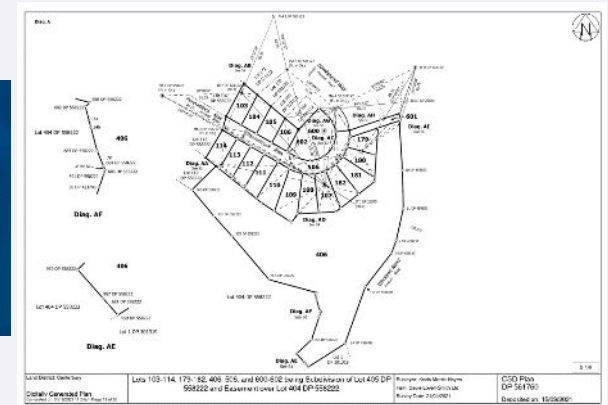
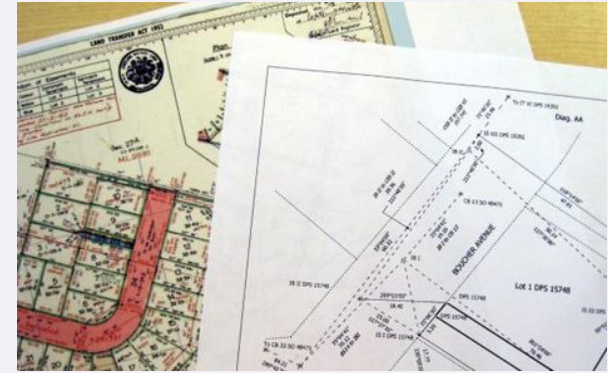
謝謝 謝謝

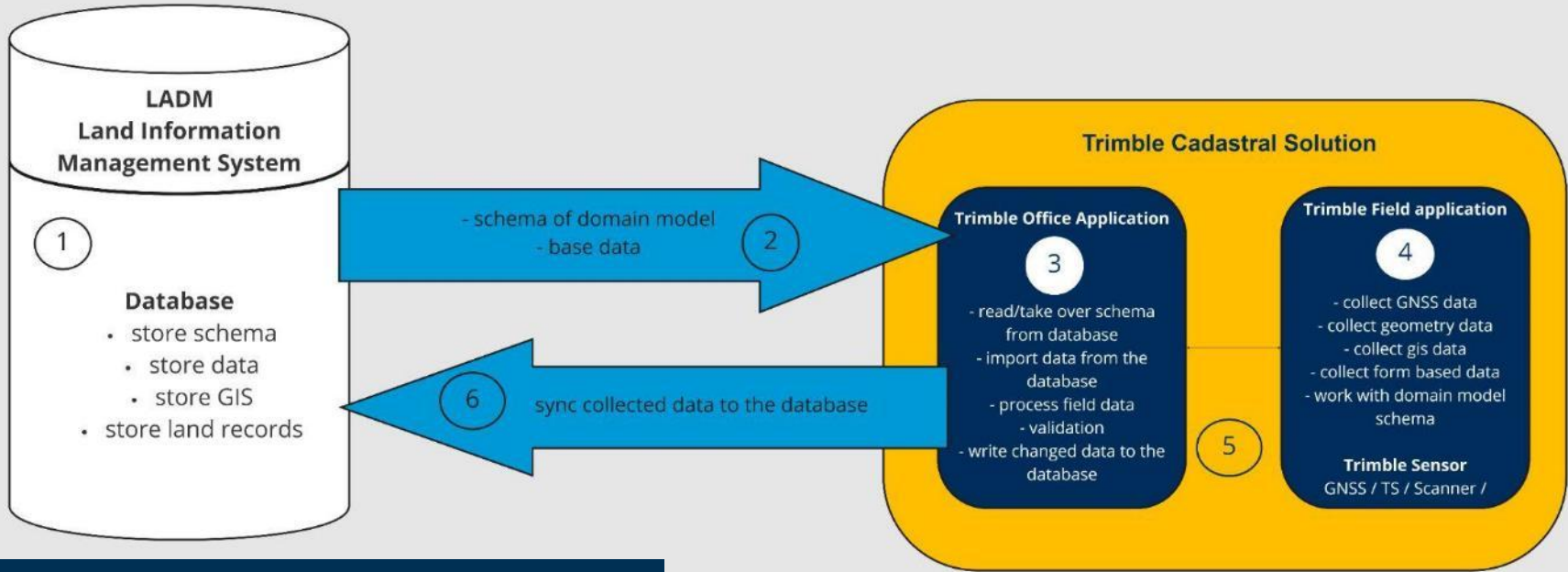
ありがとう

What is Cadastral Surveying?

The Cadastre:

- The documentation of land ownership and interests in land.
- This varies in each country;
 - Paper Records
 - Spatial Databases
- Each country has its own Cadastre or Cadastral System and with that it's own requirements and regulations for collection and for the submission of cadastral data.





Data Workflow

