

**What role will Artificial Intelligence play in the coming years
for Surveyors, Spatial Information Management and Spatial Planning?**

- Some food for thought -

Geospatial Information Management - a short poem

*Geospatial Information Management is a term that's hard to explain
It's a way of managing data with a geographic domain
From mapping and tracking to storing and sharing
GIM maintains our data sustaining.*

*From land use to population, GIM tells us more
To understand what's happening on the shore
From geocoding to routing, GIM has it all
Our data is safe, taking no fall.*

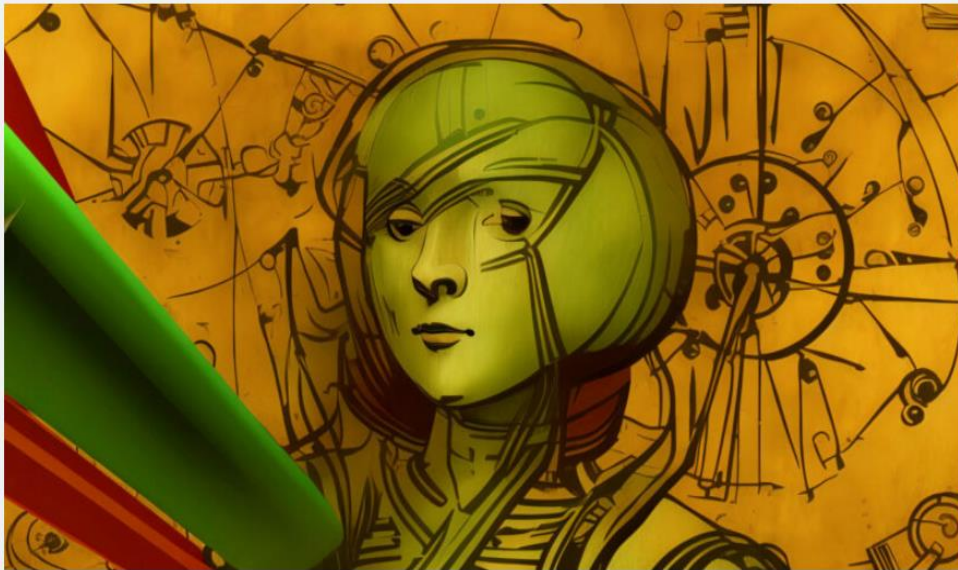
Author ???

I'M A POET AND I KNOW IT —

OpenAI upgrades GPT-3, stunning with rhyming poetry and lyrics

Refinement to AI language model generates rhyming compositions in various styles.

BENJ EDWARDS - 11/29/2022, 11:49 PM



Enlarge / An AI-generated image inspired by Leonardo da Vinci.

Write a rhyming poem explaining the term Geospatial Information Management in simple but accurate terms

Geospatial Information Management is a term
that's hard to explain

It's a way of managing data with a geographic domain
From mapping and tracking to storing and sharing
GIM helps us keep our data from disappearing
From land use to population, GIM can tell us more
It can help us understand what's happening on the shore

From geocoding to routing, GIM has it all
Our data is safe, taking no fall.

GIM is an important tool for many reasons
It helps us manage data in all seasons

<https://beta.openai.com/playground/p/default-summarize>

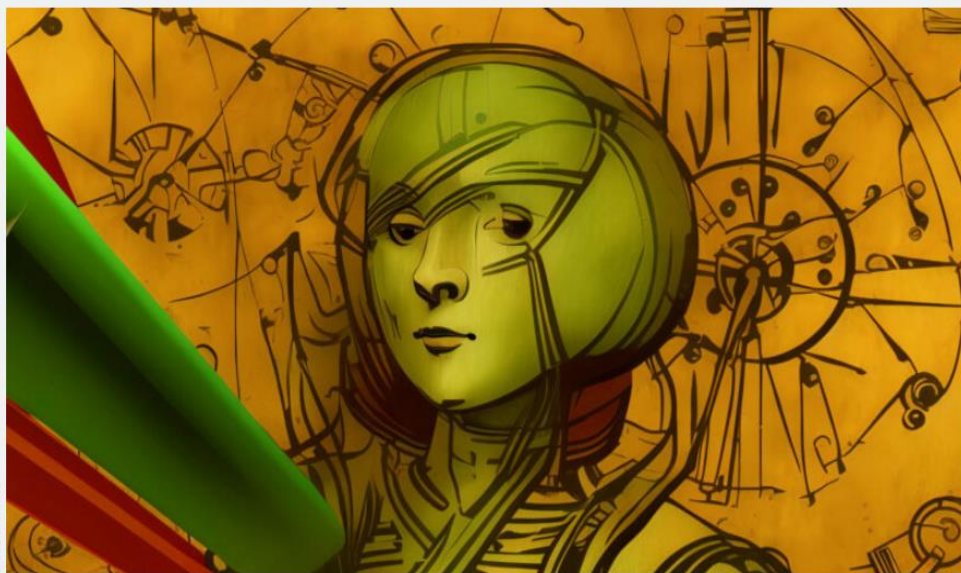
Temperature 0.3, Maximum length 256, Top P 0.4, Frequency penalty 0.5, Presence penalty 0.5, Best of 1

I'M A POET AND I KNOW IT—

OpenAI upgrades GPT-3, stunning with rhyming poetry and lyrics

Refinement to AI language model generates rhyming compositions in various styles.

BENJ EDWARDS - 11/29/2022, 11:49 PM



[Enlarge](#) / An AI-generated image inspired by Leonardo da Vinci.

Write a rhyming poem explaining the term Geospatial Information Management in Donald Trump's words

Geospatial Information Management,
A way to keep track of our nation.
From the data we can see,
Where our resources should be.
It's a tool for us to use,
To make sure our country stays on the right path
and doesn't lose.

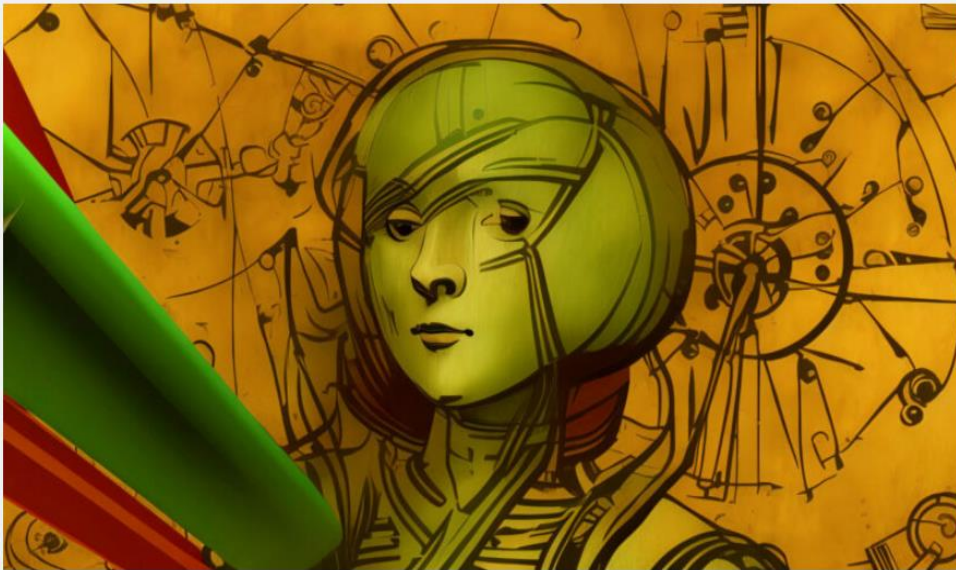
<https://beta.openai.com/playground/p/default-summarize>

I'M A POET AND I KNOW IT —

OpenAI upgrades GPT-3, stunning with rhyming poetry and lyrics

Refinement to AI language model generates rhyming compositions in various styles.

BENJ EDWARDS - 11/29/2022, 11:49 PM



Enlarge / An AI-generated image inspired by Leonardo da Vinci.

<https://beta.openai.com/playground/p/default-summarize>

Me: Write a rhyming poem explaining the term Geospatial Information Management in Vladimir Putin's words

AI: In this world of technology ever new,
It's not only a buzz word but something true;
Geospatial Information Management is the aim,
The key to power is Putin's game.

Data and mapping at our fingertips,
Mapping out the world with ease and tips,
Gathering intelligence with precision grand,
An invaluable tool for Putin's command.

We can manage and exploit data gathered by drones,
Analyzing aerial images without groans,
Storing vast amounts of information in real-time,
Putin's dream of power becomes sublime.

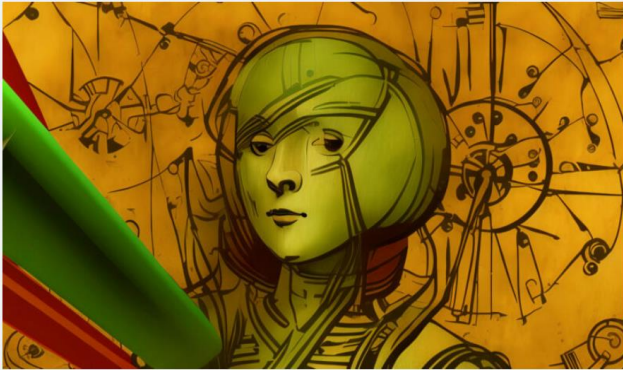


I'M A POET AND I KNOW IT –

OpenAI upgrades GPT-3, stunning with rhyming poetry and lyrics

Refinement to AI language model generates rhyming compositions in various styles.

BENJ EDWARDS - 11/29/2022, 11:49 PM



Enlarge / An AI-generated image inspired by Leonardo da Vinci.

Me: Can you improve a rhyming poem?

AI:

Absolutely! What is the original poem you'd like me to work with?

Me:

Geospatial Information Management is a term that's hard to explain
It's a way of managing data with a geographic domain
From mapping and tracking to storing and sharing
GIM helps us keep our data from disappearing

AI:

Geospatial Information Management is a concept quite unique
It covers the storing, mapping and tracking of data quite discrete
From understanding the landscape to finding our way
GIM is here to help us each and every day!

Me: I would like to keep the original and only replace the last line with a better rhythm

AI:

Geospatial Information Management is a term that's hard to explain
It's a way of managing data with a geographic domain
From mapping and tracking to storing and sharing
GIM helps us keep our data never vanishing.

Me: not yet good enough

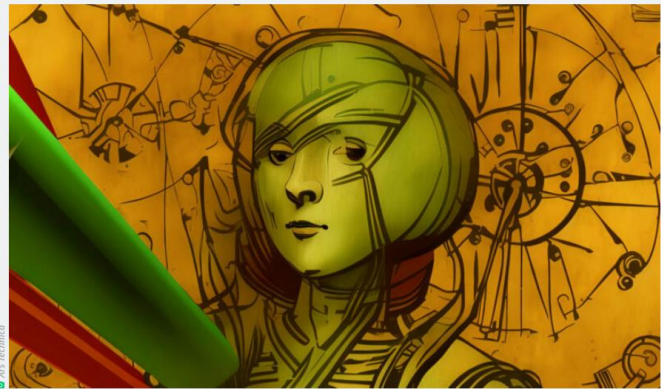


I'M A POET AND I KNOW IT —

OpenAI upgrades GPT-3, stunning with rhyming poetry and lyrics

Refinement to AI language model generates rhyming compositions in various styles.

BENJ EDWARDS - 11/29/2022, 11:49 PM



Enlarge / An AI-generated image inspired by Leonardo da Vinci.

Me: not yet good enough

AI:

Geospatial Information Management is a concept that's hard to express
It covers the mapping, tracking and storing of data no less
From understanding the landscape to finding our way
GIM is here to make sure our data stays!

Me: keep the original and replace 'disappearing' by a word that fits the rhythm better

AI:

Geospatial Information Management is a term that's hard to explain
It's a way of managing data with a geographic domain
From mapping and tracking to storing and sharing
GIM helps us keep our data never waning.

Me: what about 'fading' instead of 'waning'?

AI:

Geospatial Information Management is a term that's hard to explain
It's a way of managing data with a geographic domain
From mapping and tracking to storing and sharing
GIM helps us keep our data never fading.

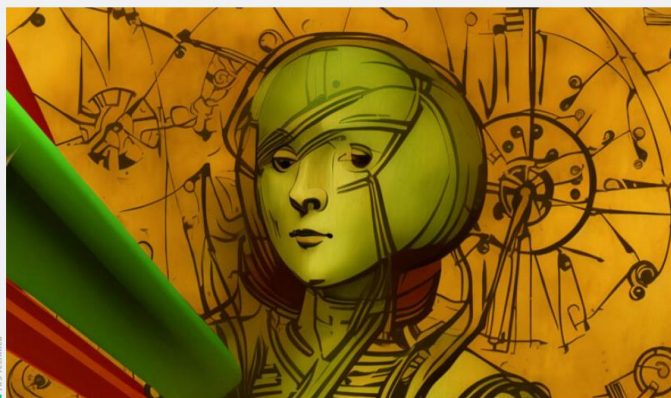
Me: what is better, 'waning' or 'fading'?

IT'S A POET AND I KNOW IT —

OpenAI upgrades GPT-3, stunning with rhyming poetry and lyrics

Refinement to AI language model generates rhyming compositions in various styles.

BENJ EDWARDS · 11/29/2022, 11:49 PM



Enlarge / An AI-generated image inspired by Leonardo da Vinci.

Me: what is better, 'waning' or 'fading'?

AI: That is subjective. It depends on what you are trying to convey and the overall tone of the piece.

Me: what about 'dancing'?

AI: Hmm, dancing might not be the right fit for this sentence. Perhaps something else such as "sustaining" might work better here. How does this sound?
...

Me: ok, thanks, that's all for now

AI: You're welcome. Is there anything else I can help you with today?

Me: no thanks

AI: Alright. Have a great day!

Me: The same to you

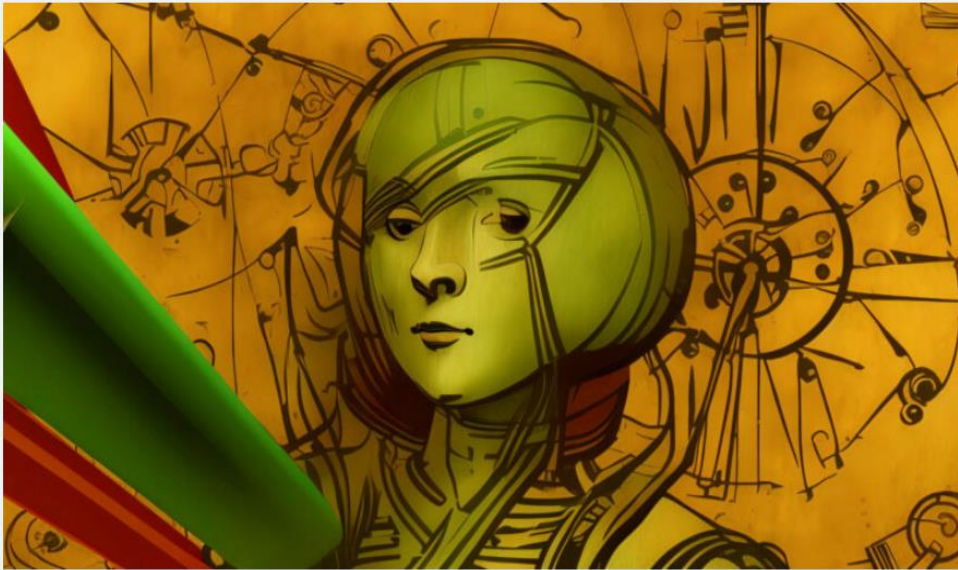


I'M A POET AND I KNOW IT —

OpenAI upgrades GPT-3, stunning with rhyming poetry and lyrics

Refinement to AI language model generates rhyming compositions in various styles.

BENJ EDWARDS - 11/29/2022, 11:49 PM



Enlarge / An AI-generated image inspired by Leonardo da Vinci.

Me: Can you check a poem if it is grammatically correct?

AI: Absolutely. May I have a copy of the poem to analyze?

Me: here it is

Geospatial Information Management is a term that's hard to explain

....

AI: It looks like this poem is mostly grammatically correct. There are a few minor errors, such as the missing article "a" after "explain" in the first line and the missing article "the" before "shore" in the fourth line. However, these errors do not detract from the overall meaning of the poem.

Me: here is an improved version. Is it better?

Geospatial Information Management is a term that's hard to explain.

....

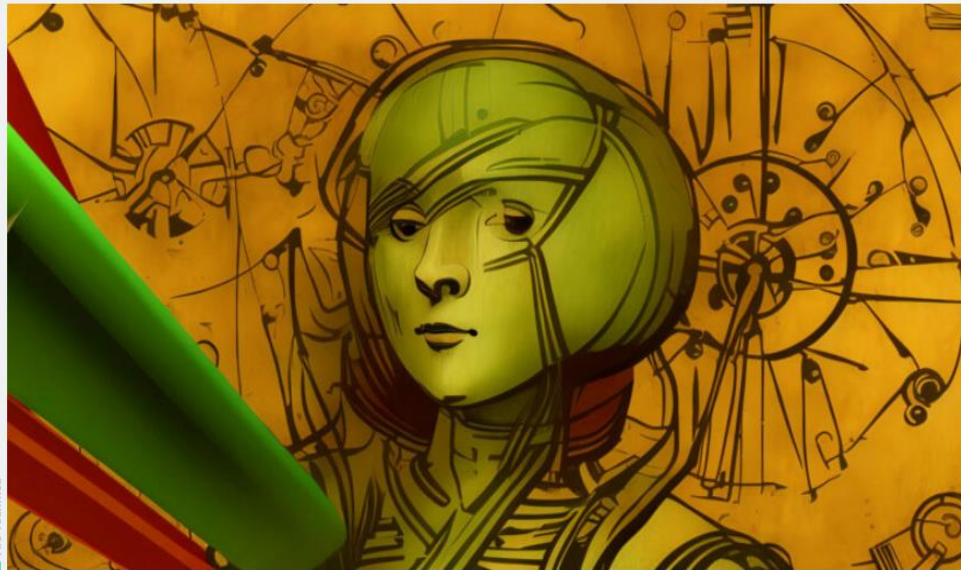
AI: Yes, this version of the poem is much better. The added articles make it grammatically correct and also help to make the poem flow more smoothly.

I'M A POET AND I KNOW IT –

OpenAI upgrades GPT-3, stunning with rhyming poetry and lyrics

Refinement to AI language model generates rhyming compositions in various styles.

BENJ EDWARDS - 11/29/2022, 11:49 PM



[Enlarge](#) / An AI-generated image inspired by Leonardo da Vinci.

Me: Write a short rhyming poem explaining Spatial Planning in simple but accurate terms

Spatial planning is the way
To make our cities safe and stay
It's a tool to help us grow
And plan for what we need to know.
From housing to transportation too,
Spatial planning helps us see it through.
It's a way to make our lives better,
So let's use it now and forever!

**How will artificial intelligence impact
surveyors, spatial information management and spatial planning
in the coming years?**

