

REPUBLIC OF SLOVENIA  MINISTRY OF THE ENVIRONMENT, SPATIAL PLANNING AND ENERGY
SURVEYING AND MAPPING AUTHORITY OF THE REPUBLIC OF SLOVENIA



PRESENTATION OF ACTIVITIES



Dr. Bozena Lipej

Bled, 13 May 2006

FIG Commission 7 Annual Meeting

WHO AM I?

- Ø Deputy Director General of Surveying and Mapping Authority of the Republic of Slovenia
- Ø Executive Director and Project Manager of Real Estate Registration Modernization Project in Slovenia (2000-2005)
- Ø chairperson of EuroGeographics' Cadastral and Land Registry Expert Group (2004-)
- Ø ex Chairperson and ex Member of the Management Board (bureau) of the UN/ECE WPLA (2001-2005)
- Ø e-mail: bozena.lipej@gov.si



PERFORMANCE OF GEODETIC WORKS

✓ private sector:

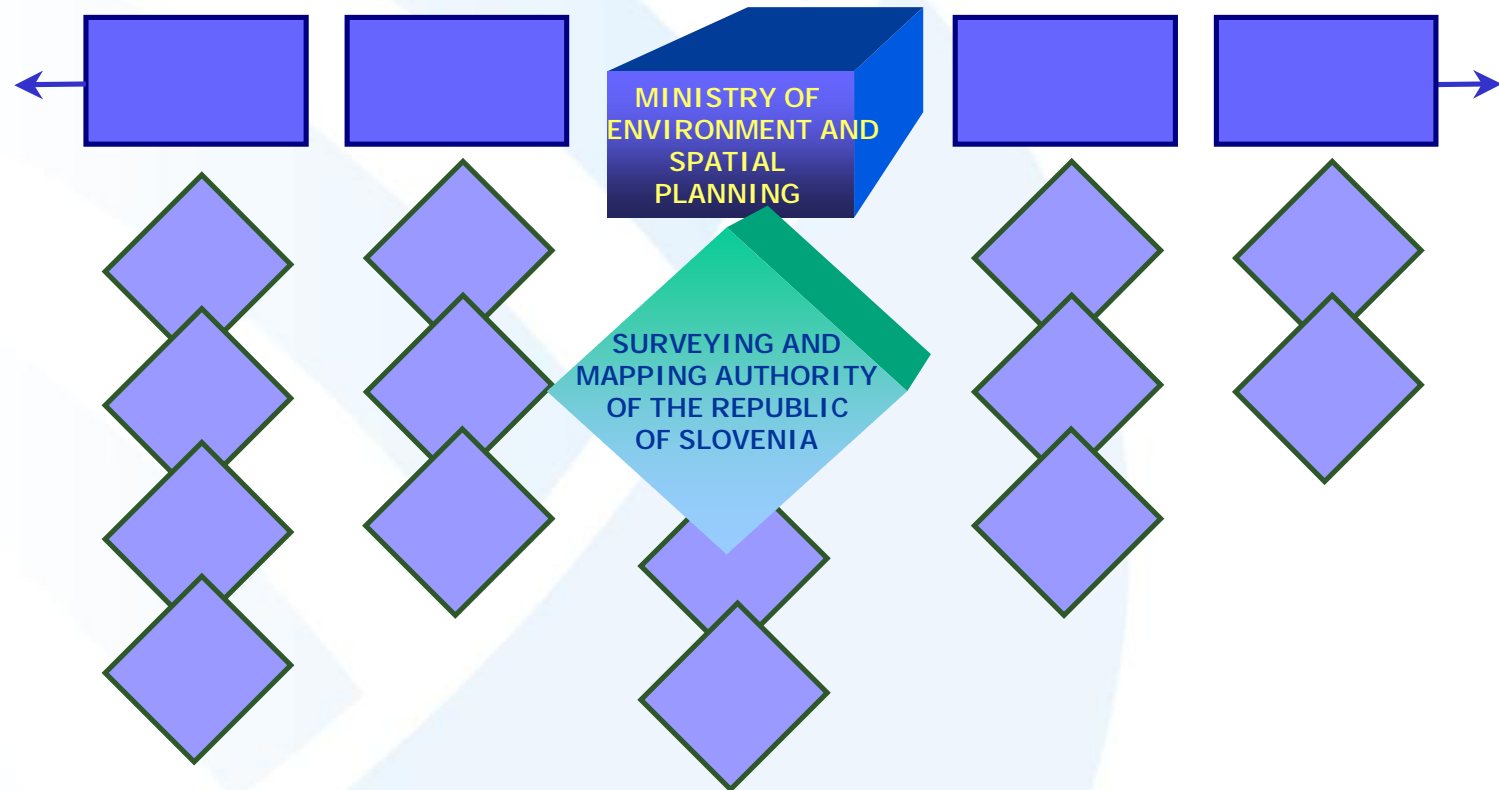
- 212 geodetic companies are licensed to perform geodetic services and activities
- about 10–20 more companies for geodetic works

✓ public sector:

- Surveying and Mapping Authority of the Republic of Slovenia
- Geodetic Institut of the Republic of Slovenia
- Ministry of Defence

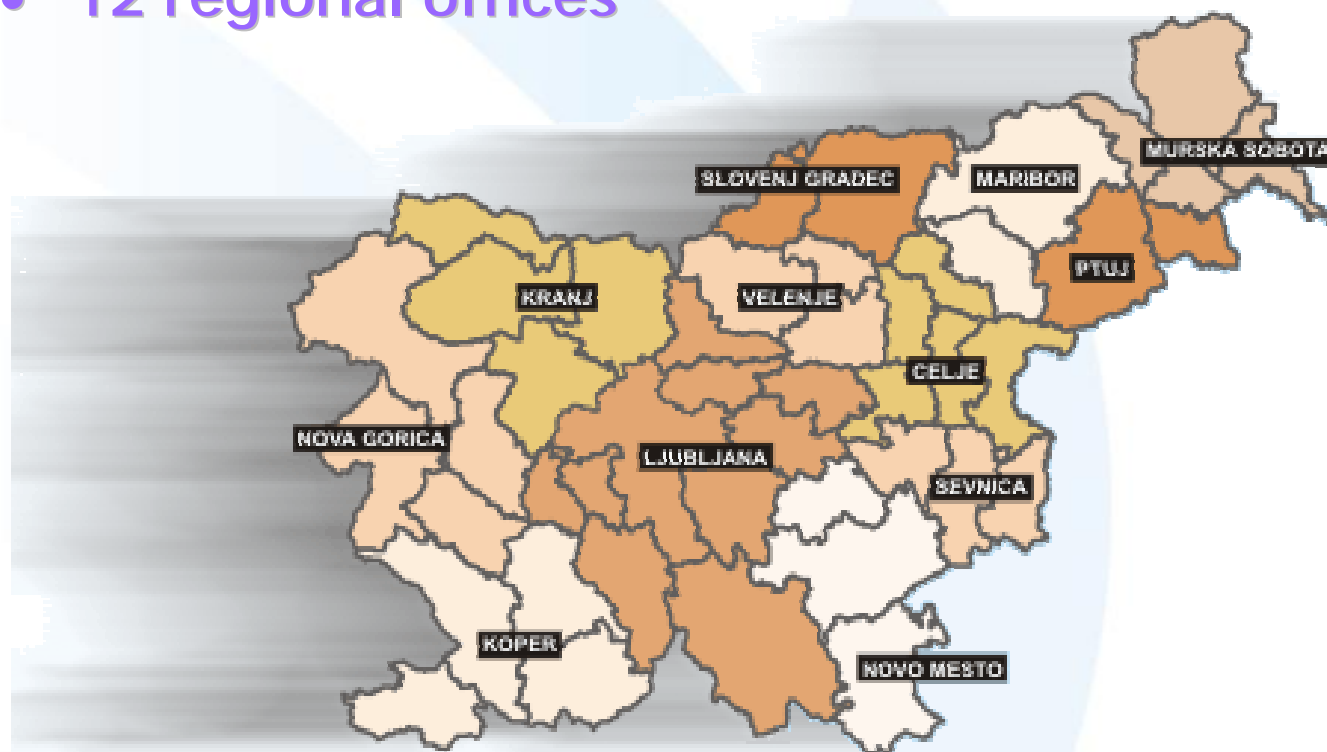


GOVERNMENT Ministries and Services

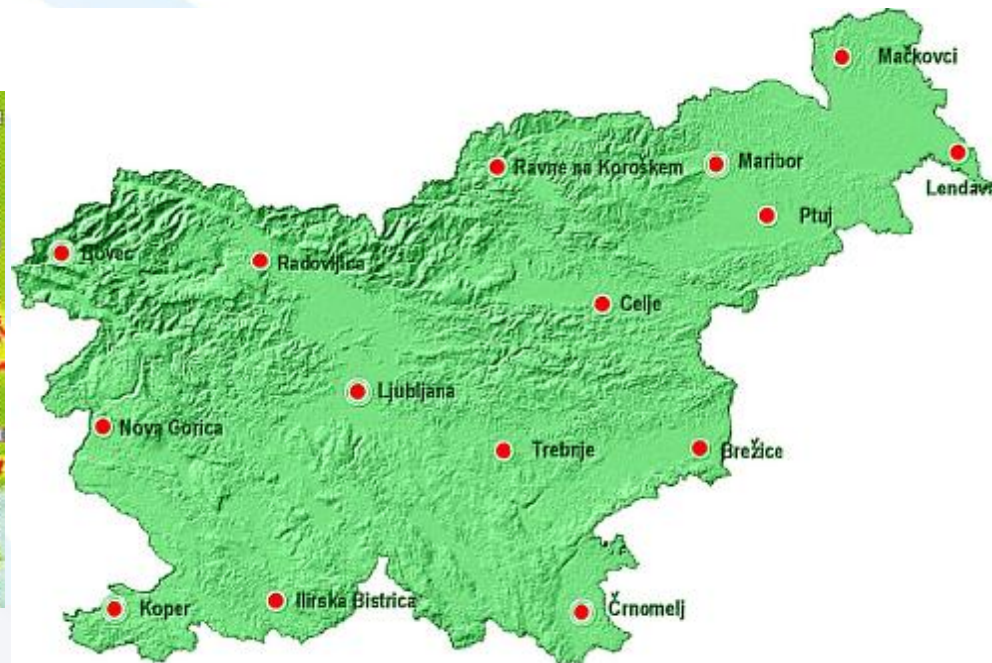


SMCA - ORGANIZATIONAL UNITS

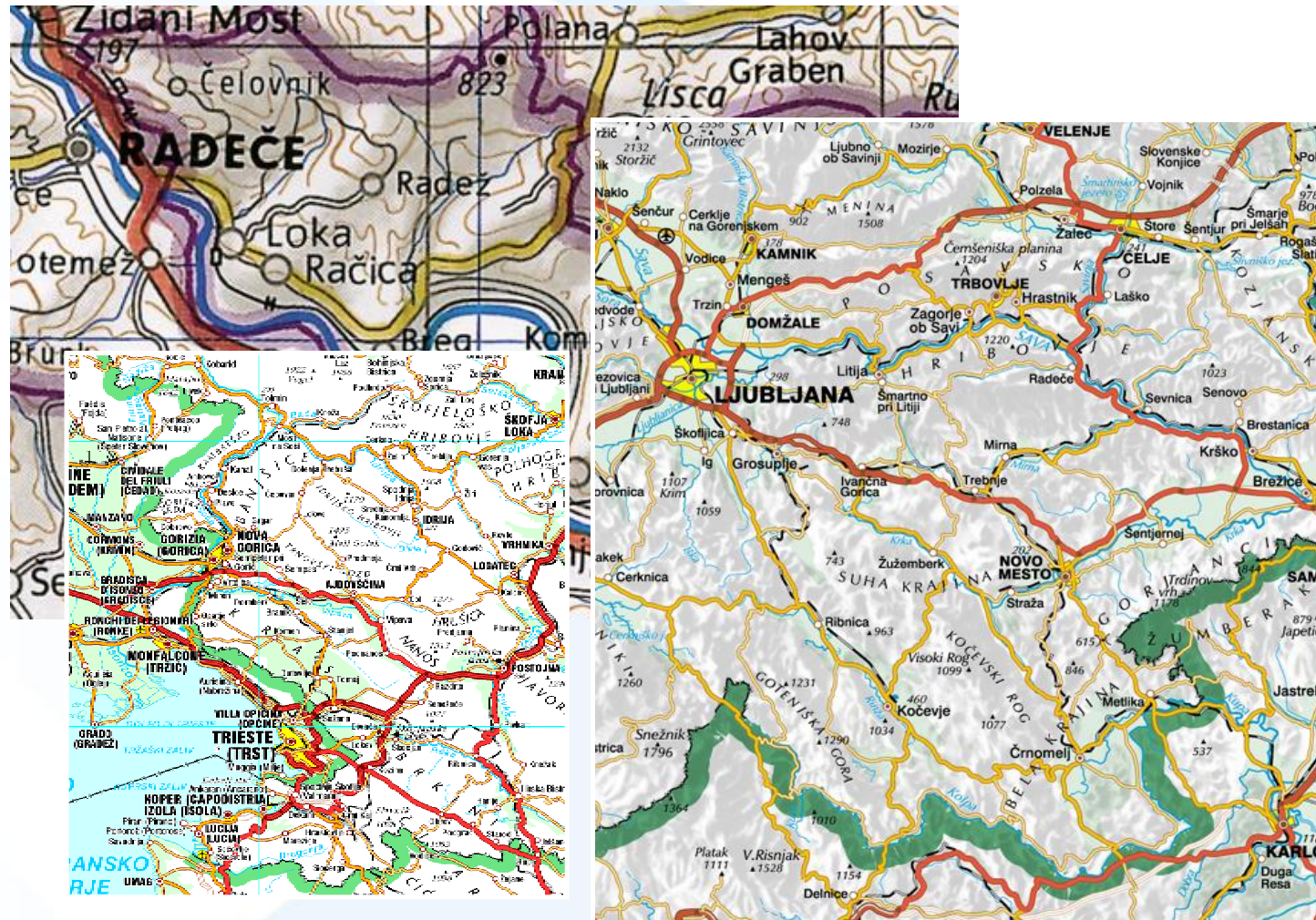
- main office
- 12 regional offices



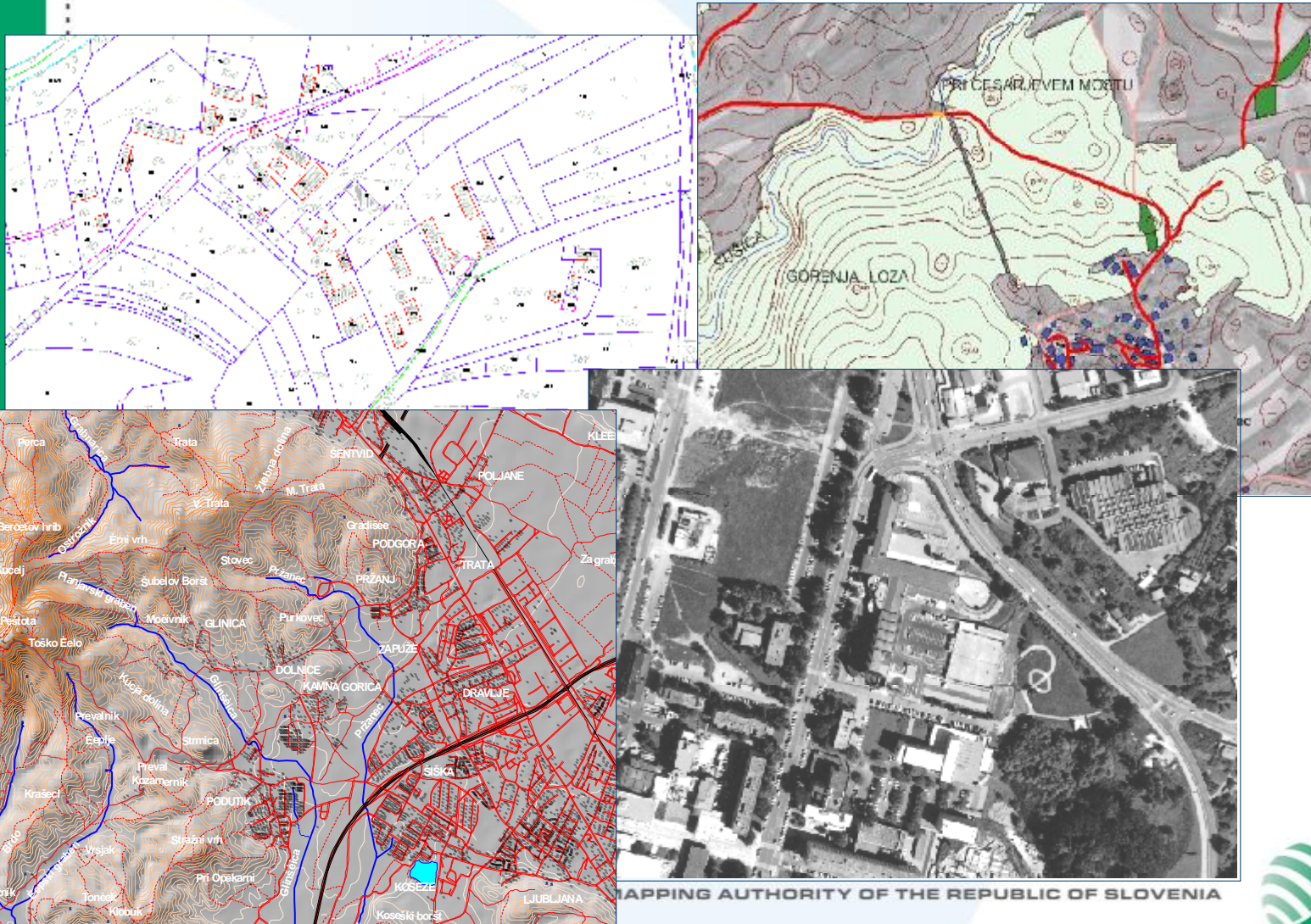
BASIC GEODETIC SYSTEM AND GPS



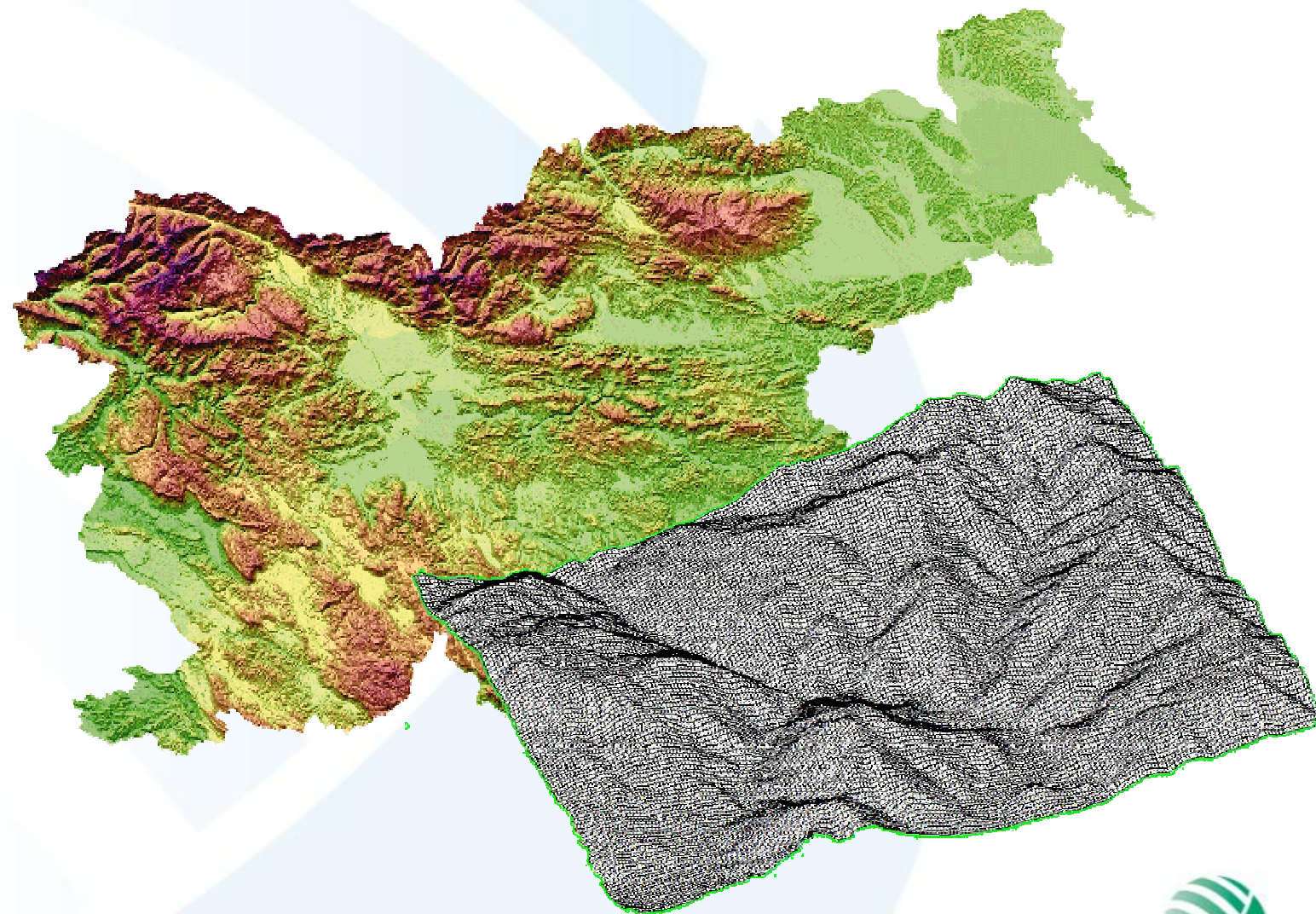
NATIONAL MAPS



TOPOGRAPHIC AND CARTOGRAPHIC DATABASES



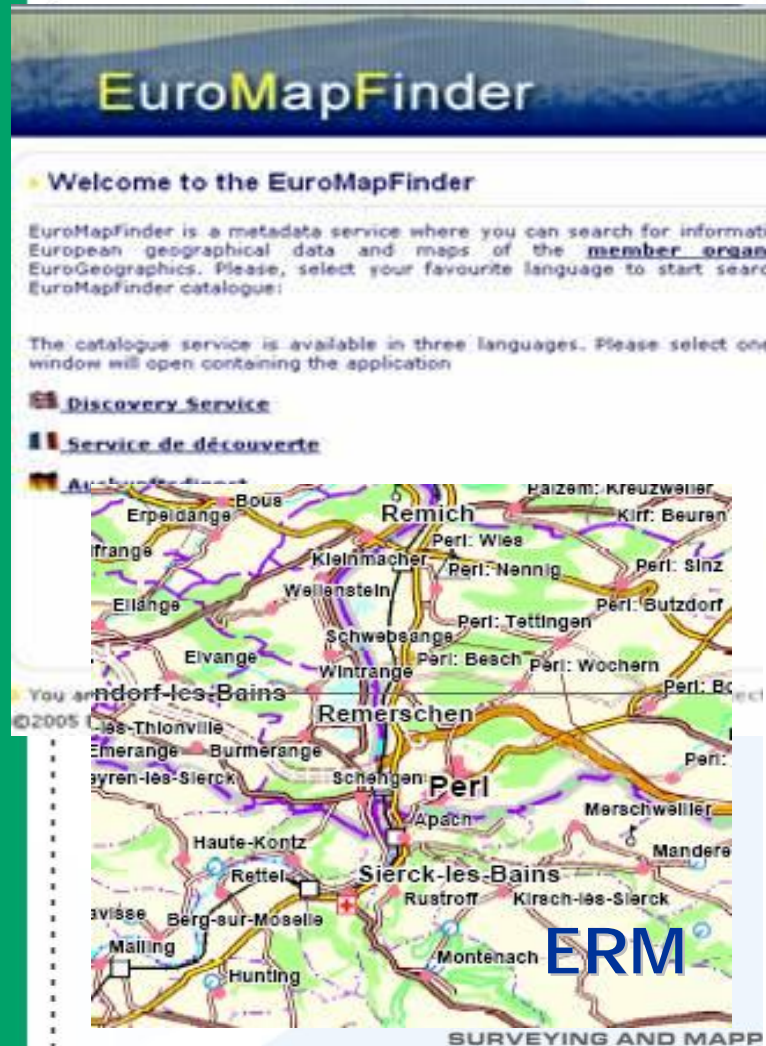
DIGITAL ELEVATION MODEL



SURVEYING AND MAPPING AUTHORITY OF THE REPUBLIC OF SLOVENIA



EUROGEOGRAPHICS: PRODUCTS




EuroMapFinder

Welcome to the EuroMapFinder

EuroMapFinder is a metadata service where you can search for information on European geographical data and maps of the member organizations of EuroGeographics. Please, select your favourite language to start search EuroMapFinder catalogue:

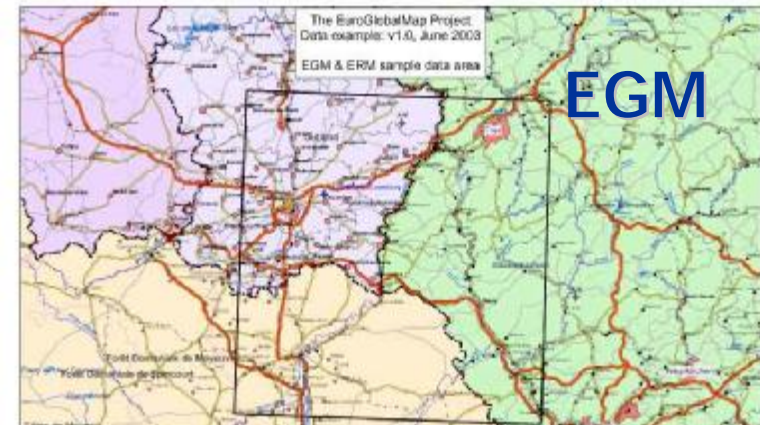
The catalogue service is available in three languages. Please select one, a window will open containing the application

- Discovery Service
- Service de découverte
- Archivoffinder

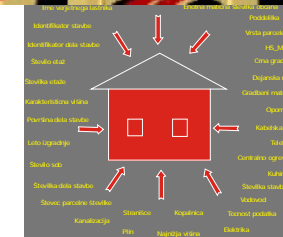
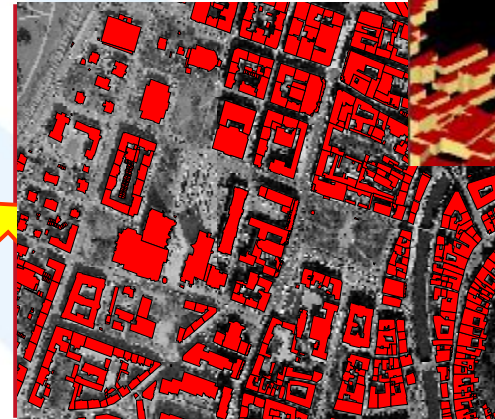
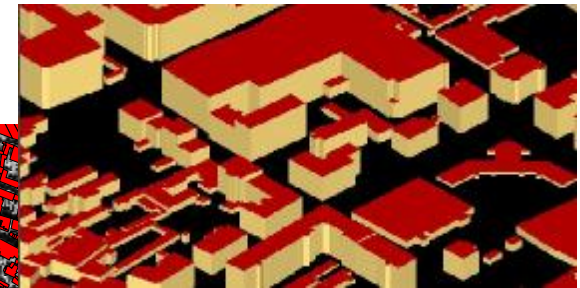
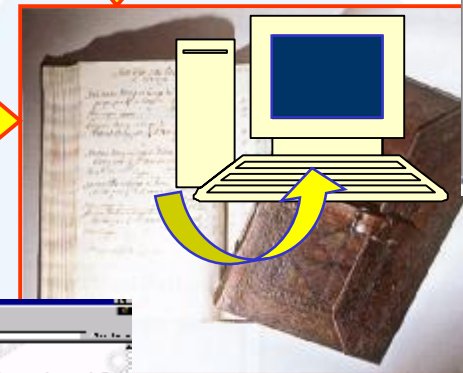


ERM

SURVEYING AND MAPPING



BUILDING CADASTER

A screenshot of a software interface showing a data table with columns for various attributes. The table contains several rows of data, including numerical values and text labels.A screenshot of a software interface showing a data table with columns for various attributes. The table contains several rows of data, including numerical values and text labels.

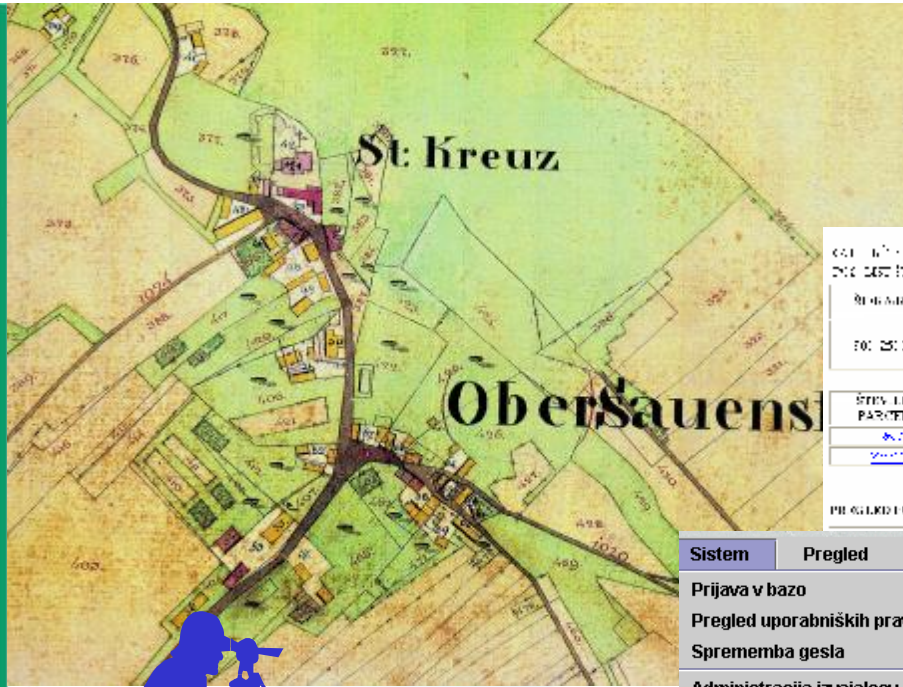
LAND CADASTER

LAND REGISTRY

SURVEY... TY OF THE REPUBLIC OF SLOVENIA



land cadastre development

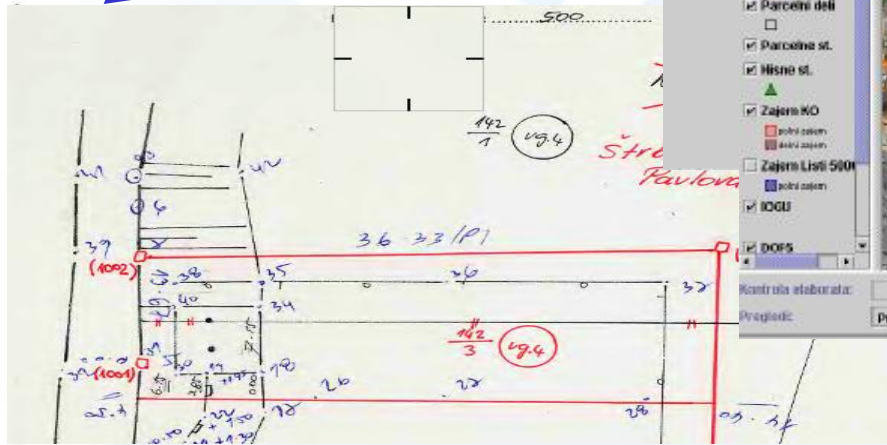
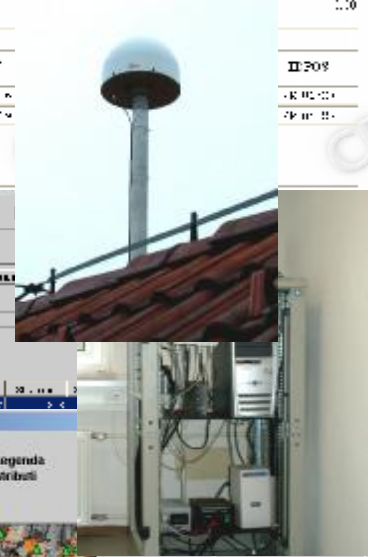


POSREDOVALNA AGENCIJA ZA NEKRETNOST	POSREDOVALNA AGENCIJA ZA NEKRETNOST	POSREDOVALNA AGENCIJA ZA NEKRETNOST	POSREDOVALNA AGENCIJA ZA NEKRETNOST
POSREDOVALNA AGENCIJA ZA NEKRETNOST	POSREDOVALNA AGENCIJA ZA NEKRETNOST	POSREDOVALNA AGENCIJA ZA NEKRETNOST	POSREDOVALNA AGENCIJA ZA NEKRETNOST
POSREDOVALNA AGENCIJA ZA NEKRETNOST	POSREDOVALNA AGENCIJA ZA NEKRETNOST	POSREDOVALNA AGENCIJA ZA NEKRETNOST	POSREDOVALNA AGENCIJA ZA NEKRETNOST



Sistem Pregled Vloge Postopki Statistike

Prijava v bazo
Pregled uporabniških pravic
Sprememba gesla
Administracija izvajalcev
Administracija enot taksacije
Izbira [OCU]



Izhod iz

Legenda
Atributi

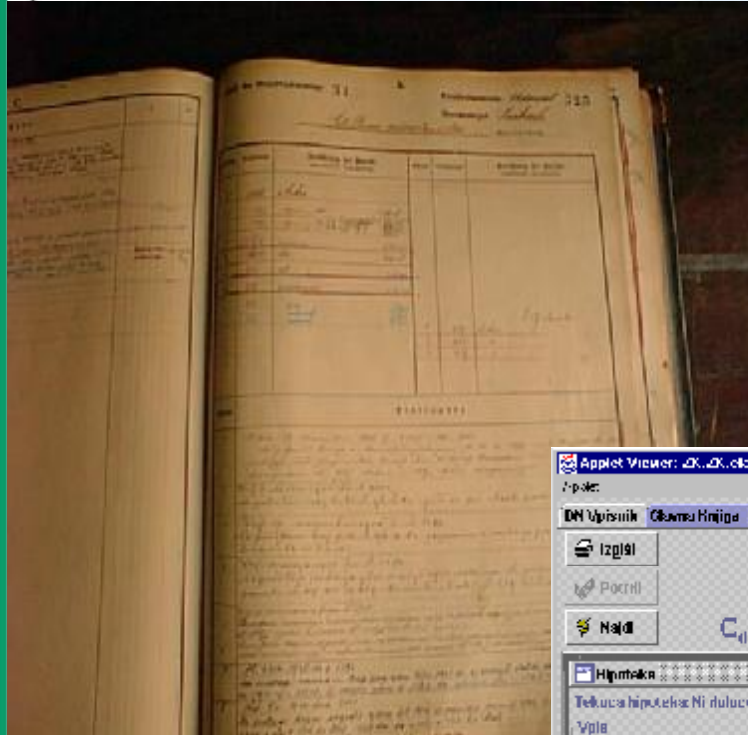
- Stave
- Obris stavb
- Parcelni deli
- Parcelne st.
- Nisne st.
- Zajem KO
- Zajem Lisi 500
- IOCU
- DOFS

Kontrola stabilnosti: Prejeto Zaprto Izbira vsebine

Pregled: Prejeto izbranih podatkov v atributni dot Pregled zgoščenine Zaprto

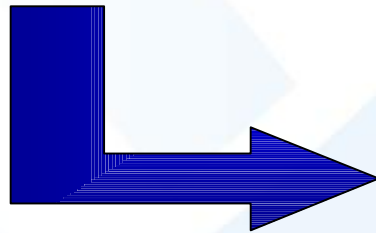


land registry development



The screenshot shows a software interface for land registry management. It includes a main form with fields for 'Ime', 'Prezime', 'Mestani', 'Kodna Ljudik', and 'Kraj'. Below the form is a table with columns for 'Dati. dob.', 'Dati. vstop.', and 'Dati. izstop.'. A blue arrow points from the historical book image to this software interface.

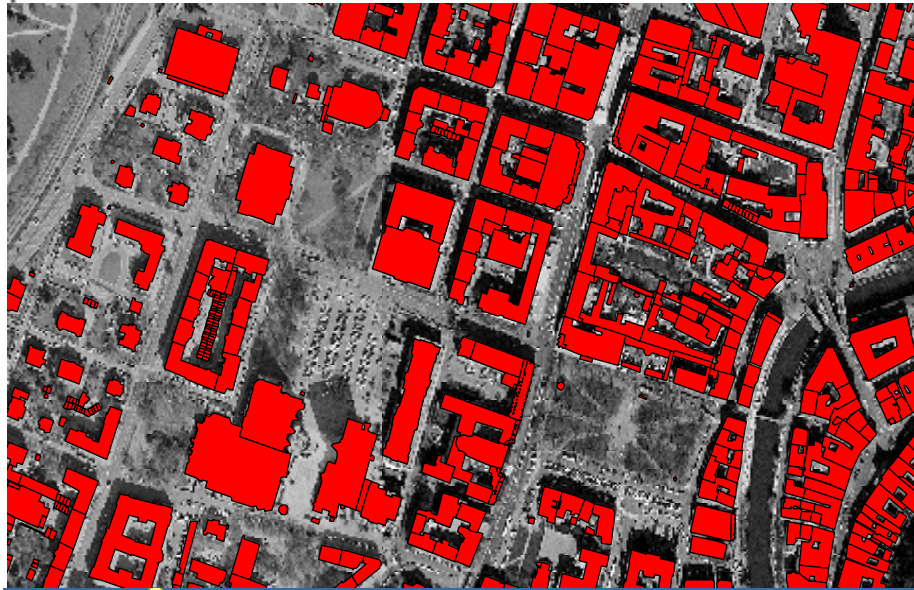
Dati. dob.	Dati. vstop.	Dati. izstop.
13.04.1931	14.07.1966	07.02.2000
01.10.1947	01.01.1973	07.02.2000



SURVEY



building cadaster set-up



Stavbeni blok
Vojkova ulica št.9, Ljubljana
Dosa PRUČIJA

SR STAVBE PREGLED PODATKOV IZBRANE STAVBE

Šifra stavbe: 21831632 SL stavbe: 11/7 KO: 1973 SEMNICA

Številna površina: 333,7

Številni etaji: III

Leto izgradnje: 1973

Datum: 29.12

Številna ravnalnja: 7a

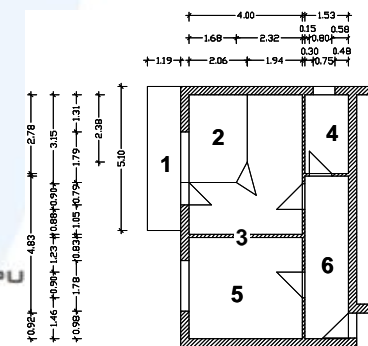
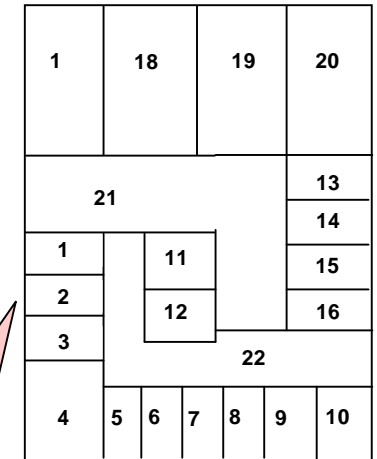
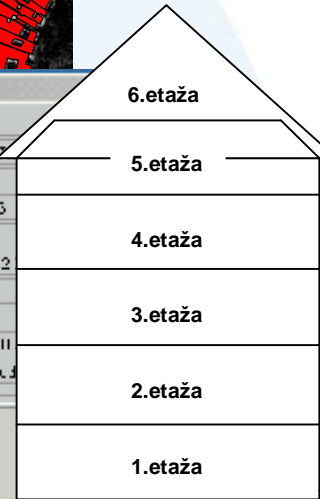
Datum veljavnosti stavbe: 01.11.11

Du: Ni pod.

Materialno nosilni konstr.: Kombinirano

Opomba: NASPILJE PRUČIJA KAROLNA 14

Parcela	Y	X
1	523623.41	56700.77
2	523623.47	56511.33
3	523623.3	56700.77
4	523623.21	56454.34
5	523623.11	56700.47
6	523623.57	56405.37
7	523623.16	56700.44
8	523623.0	56404.31
9	523623.111	56700.41
10	523623.04	56501.35
11	523623.12	56700.42
12	523623.04	56500.34



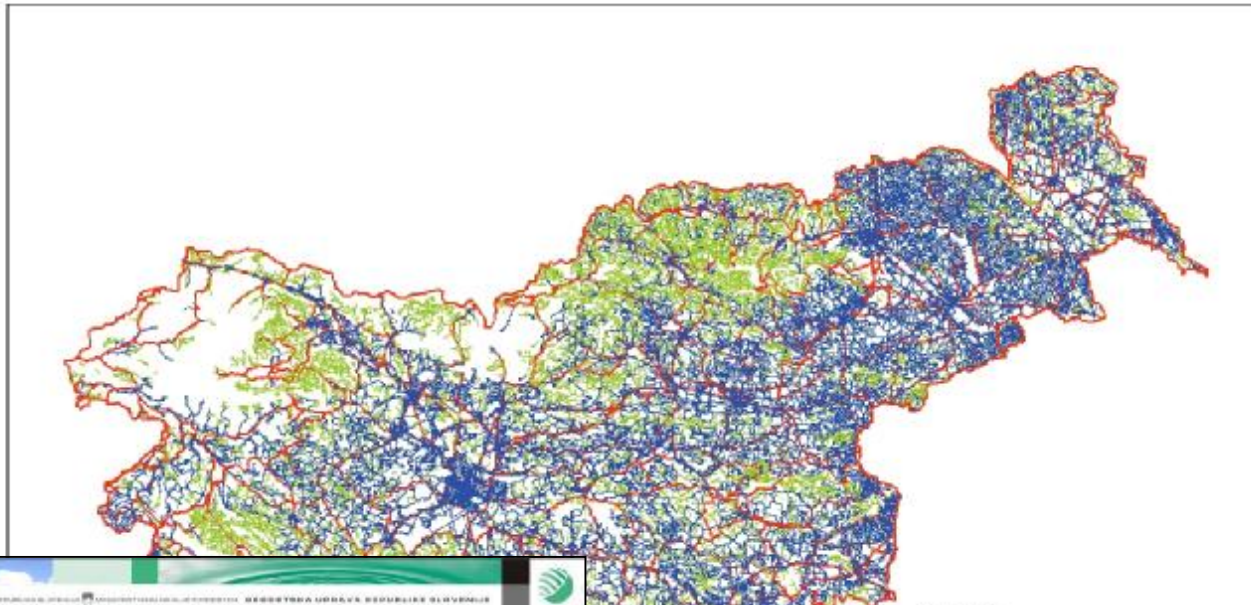
real estate market record – common database

The screenshot displays the 'VPOGLEDI ZA REGISTRIRANE UPORABNIKÉ' (Views for registered users) interface. It includes a public view, a central evidence database, and a job list. A map of Slovenia shows numerous red markers indicating job locations. A detailed view of a specific job is also shown, including its location on a street map and various job details.

STATISTICS
 number of users: 383
 number of real estate organizations: 270
 number of jobs: 7 515
 number of put info force jobs: 6 043

SURVEYING AND MAPPING AUTHORITY OF THE REPUBLIC OF SLOVENIA

utilities recording - general level



Mesto: **Stará Ľubovňa**
 Dátum: **28. April 2020 9:08:45**

Podrobné údaje:
 Smerovanie: **Trasá objektu** | **Trasá objektu**

Zobraziť podrobnosti na plošnom území: **0/0**

Trasá	Trasá objektu z DK GZ	Šírka v metroch GZ	Trasá v metroch GZ	Skupinová dĺžka v metroch	St. plošného územia
Trasá objektu	Infraštruktúra plynovej siete - trasa objektu	2005	Metri na regulárnej sieti	2452,43m	41

Zobraziť podrobnosti na plošnom území: **0/0**

Trasá	Trasá objektu z DK GZ	Šírka v metroch GZ	Trasá v metroch GZ	Skupinová dĺžka v metroch	St. plošného územia
Čerpa	Čerpa - objekt objektu	1,00	Čerpa (na sieti)	194766,11m	7011
Čerpa	Objekt čerpa	1,00	Objekt čerpa	3000,12m	23
Kanalizácia	Kanalizácia - objekt objektu	2200	Samostatný objekt	408712,24m	17411
Trasá objektu	Infraštruktúra vodného zberu - objekt objektu	2700	Trasová	26705,61m	803
Vodovod	Vodovod - objekt objektu	3000	Vodovodná sieť	246095,50m	11253
Trasá objektu	Základnica - objekt objektu	1200	Základnica objektu	26134,70m	17
Trasá objektu	Infraštruktúra plynovej siete - objekt objektu	2200	Trasová	24664,00m	8033

Zobraziť podrobnosti na plošnom území: **0/0**

Trasá	Trasá objektu z DK GZ	Šírka v metroch GZ	Trasá v metroch GZ	St. plošného územia
Sieť objektu	Rozvážacia sieť objektu - trasa objektu	3000	Objekt na rozvážaciu sieť	1
Vodná inžinierstvo	Vodná inžinierstvo - trasa objektu	1000	Vodná inžinierstvo	1
Vodovod	Vodovod - trasa objektu	2100	Objekt inžinierstva	32
Trasá objektu	Infraštruktúra plynovej siete - trasa objektu	2000	Objekt inžinierstva plynovej siete	8812

Mesto: **1.345**
 Izba: **200** | **Obrazovka** | **Spoločná** | **Kvalita: 30** | **veľ: 1:31**

Zoznam objektov:
 Parcely
 Parcely s...
 ZK toka GZ
 ZK toka objektu
 ZK toka stavby
 Geografické body:
 Horizontálne smerová
 Horizontálne tvarová
 Vlnitá glos
 Katalóg stavb:
 Čerpadlá
 Objekt

e-geodetic records

Iskanje po parceli - Microsoft Internet Explorer

Datoteka Urejanje Pogled Prijubljene Orodja Pomoč

Nazaj Iskanje Prijubljene Večpredstavnost

Naslov http://prostor-test.sigov.si/preg/zk_parcele.jsp

REPUBLIKA SLOVENIJA MINISTRSTVO ZA OKOLJE, PROSTOR IN ENERGIJO GEODETSKA UPRAVA REPUBLIKE SLOVENIJE

Grafika Prijava/Odjava Pomoč Moj Profil Vizitka

Uporabnik: UMLADENOVIC

Zemljiški kataster Geodetske točke Kataster stavb Register prost. enot

Iskanje po parceli
Iskanje po lastniku
Iskanje po PL
Iskanje po ZKVL
Iskanje po ZK točki
Iskanje elaborata

Iskanje po parceli

Katastrska občina
2035 ŠKOFJA LOKA

Parcela
208/1

Rezultat poizv

Zadetkov: 1

Šifra katastrske

Opisni podatki o parceli - Microsoft Internet Explorer

REPUBLIKA SLOVENIJA MINISTRSTVO ZA OKOLJE, PROSTOR IN ENERGIJO GEODETSKA UPRAVA REPUBLIKE SLOVENIJE

Torek, 31 Avgust, 2004 11:01:05

Uporabnik: UMLADENOVIC

Transakcijska številka: Z289-02-04

Opisni podatki o parceli:

Podatki o parceli

Šifra katastrske občine	Ime katastrske občine	Parcela	Površina	ZKV	PL	Dokazilna	Datum veljavnosti
2035	ŠKOFJA LOKA	208/1	400	1459	1254	-	22.04.1999

Podatki o vrstah rabe parcele

Šifra vrste rabe	Vrsta rabe	Razred	Površina
201	STANOVARSKA STAVBA	-	127
211	DVORIŠČE	-	273

PREG - Grafika - Microsoft Internet Explorer

Merilo 1:1500

200 m

Prejeto karte

PREG - Grafika - Microsoft Internet Explorer

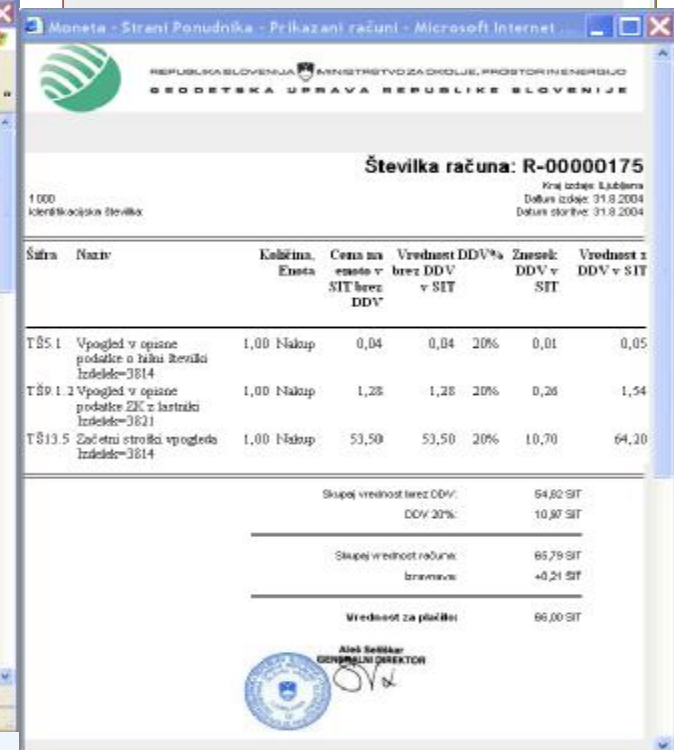
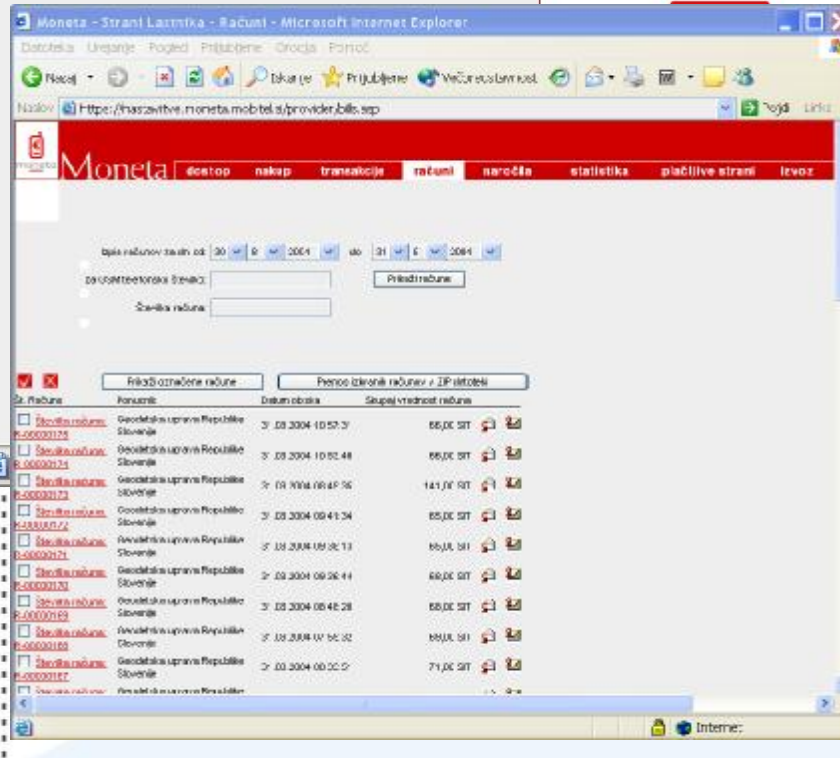
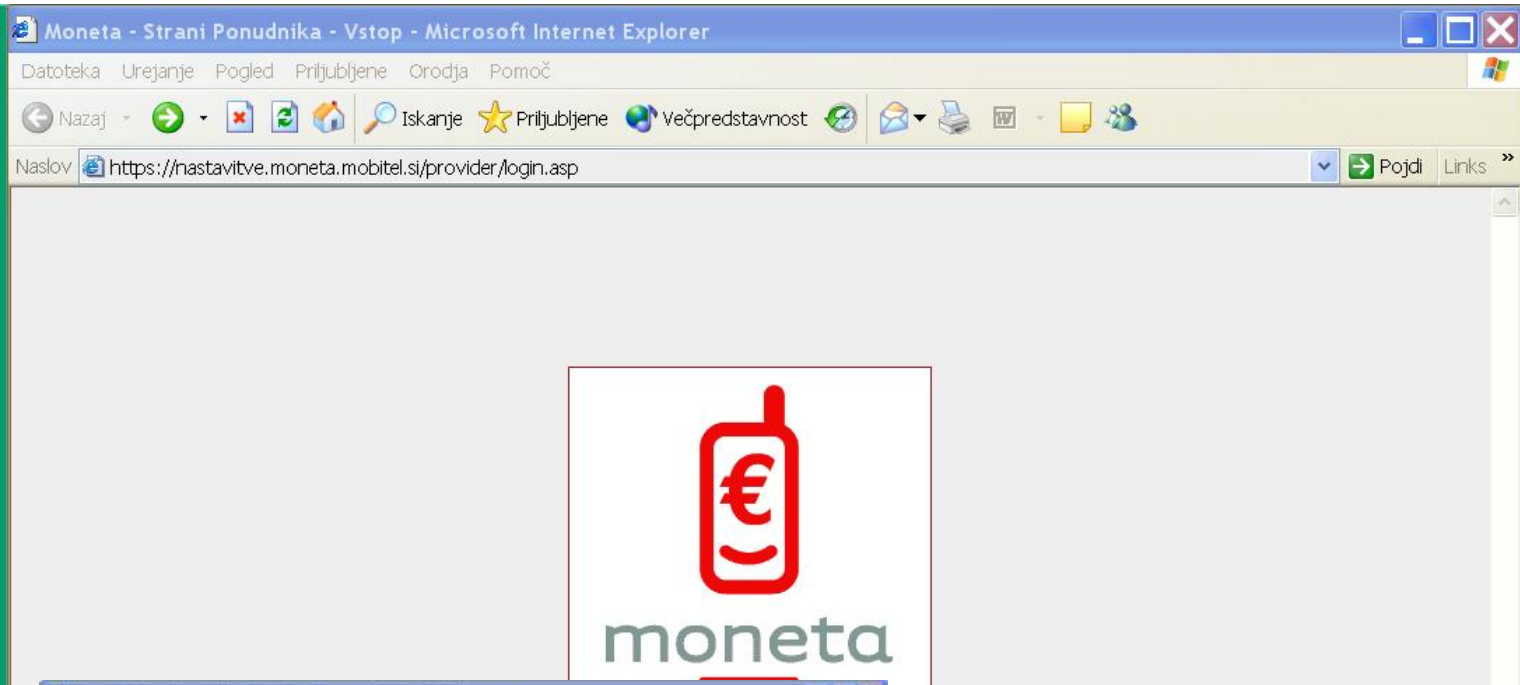
Merilo 1:1500

200 m

Prejeto karte

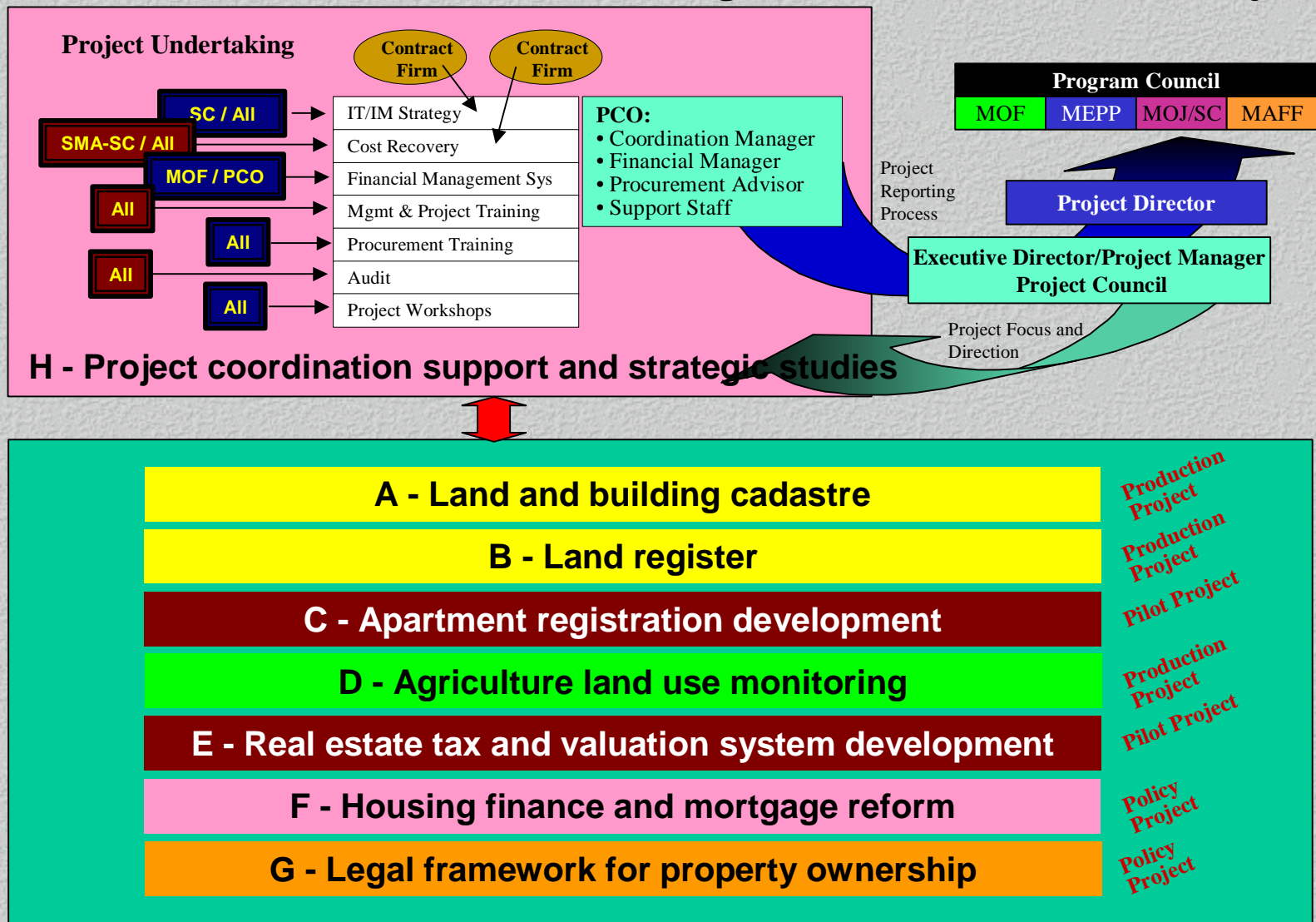
Y-462844 X-100504

e-charging for services





Real Estate Registration Modernization Project



CURRENT ACTIVITIES (1)

q new legislation adopted – real estate recording, mass valuation:

- changes in administrative procedures,
- inventory on buildings and parts of buildings with the owners and users,
- real estate register set-up,
- general valuation (mass valuation models, price indexes, RE value indexes), value attribution,

q expected: RE taxation act,



CURRENT ACTIVITIES (2)

q government decision: RE institutional joining, agency set-up: 2008, in operation: 2010,

q joint RE management – drafting a new law,



q promotion of national spatial and RE data infrastructure (INSPIRE),

q operational activities – new coordinate reference system, e-services, one stop-shop...,

q financial perspective: 2007-2013 – raising awareness for setting-up NSDI and requesting EU funding,



PARTNERS FOR COOPERATION IN SLOVENIA

- q local and regional authorities
- q state administration
- q Universities, incl. Faculty for Civil Engineering and Geodesy
- q educational institutions
- q NGOs, incl. Association of Surveyors of Slovenia
- q private sector associations, incl. geodetic ones and the Chamber of Engineers with Geodetic Section
- q other public and private organizations and associations
- q several users of data and customers



INTERNATIONAL COOPERATION

- ✓ member of EuroGeographics
- ✓ member of European association for real estate management (UN/ECE WPLA - Working Party on Land Administration) within the United Nations Economic Commission for Europe
- ✓ member of UNGEGN - United Nations Group of Experts on Geographical Names
- ✓ observer in PCC – Permanent Committee on Cadastre in the European Union
- ✓ active in ex-YU territory and in the territory of Central Europe
- ✓ cross-border sharing experiences and best practices



Expert Group on Cadastre and Land Registry

- projects: a new vision statement on cadastre and land registry + an information resource for cadastre and land registry for the purpose of benchmarking + the role of cadastral parcel in INSPIRE and national SDIs,
- workshops,
- a platform for information exchange and synchronization with cadastre and land registry key players in Europe
- working on a new work programme,
- JOIN US IN VIENNA 7-8 JUNE 2006

